



**Diar**  
Consulting Group

We provide Consultant & Engineering Services primarily  
for the infrastructure, buildings and Oil & Gas projects  
located in Egypt and elsewhere in  
the Middle East and Africa.

**Profile**  
Company

# Table of Content

Diar Consulting Group is a Consultant Group Established in January 2009 to provide Consultant & Engineering Services primarily for the infrastructure, buildings, and Oil & Gas projects located in Egypt and elsewhere in the Middle East and Africa.

## **1** ABOUT DIAR

Our Mission, Vision, Values  
Why Diar  
Our Team Culture

## **2** OUR CORE VALUES

Integrity, accountability, diligence,  
perseverance, and, discipline

## **3** OUR BOARD OF DIRECTORS

A Board of directors with over 40  
years of experience in Different  
engineering fields.

## **4** OUR ORGANIZATION CHART

It shows the internal structure of Our  
organization.

## **5** OUR ENGINEERING DISCIPLINES

Our Mining Capabilities and Our Energy  
Generation Capabilities  
and Experience

## **6** DIAR MINING, ENERGY GENERATION CAPABILITIES

## **7** OUR PROJECTS

Building, infrastructure,  
Industrial, and Oil & Gas  
and PMC Projects

## **8** DIAR OLD PROJECTS

Diar Old Projects in Egypt  
and The MENA Region

## **9** PARTNERSHIPS

Our Partnership with Bechtel

## **10** CERTIFICATIONS

Our Certifications and Clients  
Appreciation

## **11** OUR OFFICES MAP

Diar Offices Map in Egypt and the  
MENA Region

## **12** CONTACT INFO

Social Media Accounts, Website  
and Our Contacts.

# About Us

Diar Consulting Group is a Consultant Group Established in January 2009 to provide Consultant & Engineering Services primarily for the infrastructure, buildings, and Oil & Gas projects located in Egypt and elsewhere in the Middle East and Africa.



**While maintaining a Relentless focus on safety and an uncompromising standard of quality. Regardless of a project's size or location, DIAR delivers Consistent, superior results, which our customers have come to expect. We are confident in our capabilities, our talented workforce, and the Long-term Growth of the markets we serve.**

Today we continue our legacy of excellence with a unique business model that offers a more complete supply chain solution to our customers.

“

With extensive capabilities that serve our diverse end markets, we can work on a project from concept to completion and beyond.

Regardless of a project's size or location, DIAR deliver consistent, superior results, which our customers have come to expect.

”





# **Our Mission**

Real Estate services without difficulties

To provide engineering and consulting services (design & supervision) for the infrastructure (Civil works ,architecture and landscape), buildings and Oil & Gas projects Serving our clients locally and Regionally.

**Our clients can depend on our ability to design any project from feasibility, preliminary through for construction, tender package stages.**



# Our Vision



Our vision is to be one of the key professional firms in the fields of Engineering & consulting services in MENA Region for the infrastructure, buildings and Oil & Gas sectors.



## Our Design Principles

Design should fit the Client **Budget**.

Considering how we want to use the available resources.

Design should meet **Client Requirement**

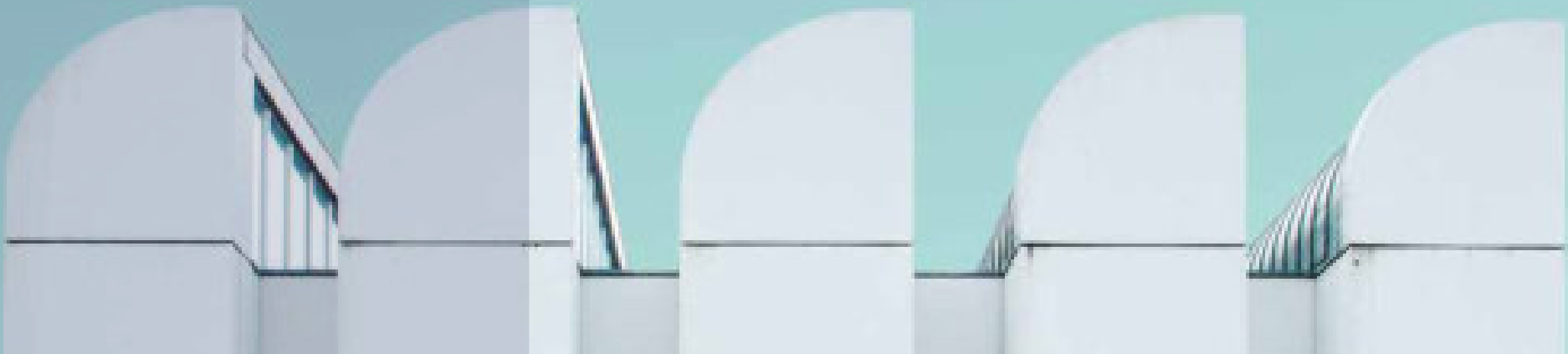
allow the project team to explore variable options, and recommend the best option which suite and deliver the Client Requirements.

Design should meet the **Propose Target**

The Goal of engineering design is always to solve a problem.

Design should be **Applicable**

Engineering design also should be leading to improved solutions and positive outcomes.



# Why Diar... ?

At Diar we partner with our clients to **provide superior quality solutions that deliver – or Exceed - the results** they are seeking and give them peace of mind that their operations are running smoothly.

## Our Team CULTURE

Every day we work to maintain the highest level of our personnel's competence through regular training, organizational tests and the implementation of proven human resource management methods.

The members of our team have gained their experience while working on many projects and designing solutions for **international corporations as leaders in their industries.**

We have a reputation for innovation and a proven track record for success, having **completed numerous major projects, both national and international**, on spec, on time and on budget.



**Health and safety** is more than just a mantra at Diar; it is a driving force behind every element of our business operation. We have a genuine commitment to conserving the natural environment, where we are recognized as leaders in our field.

# Our Core values

At DIAR, we're guided by [8] Core Values that fuel our success and shape our Interactions with each other and our clients.



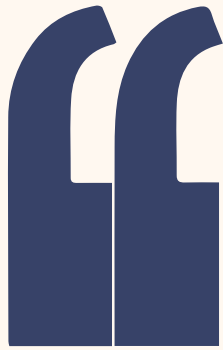


Making  
your Vision  
become a **Reality**  
is our **Specialty**



**DIAR BRINGS THE EXPERTISE OF MULTINATIONAL CONSULTANTS CAPABILITIES  
COUPLED WITH THE HISTORY OF SUCCESSES, TECHNICAL AND LOCAL  
KNOWLEDGE OF MIDDLE EAST MARKET..**



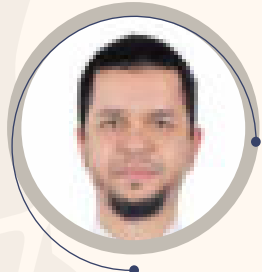


A CLOSE LOOK AT  
DIAR CONSULTING  
GROUP



# Meet our Board of Directors

GREAT TEAMWORK IS THE ONLY WAY WE CREATE THE BREAKTHROUGHS THAT DEFINE OUR CAREERS.



## HANY NABIL

MANAGING DIRECTOR,  
PH.D, M.SC

THE MANAGING DIRECTOR OF DIAR (THE LEADING CONSULTANT ENGINEERING FIRM SERVICING PRIMARILY THE INFRASTRUCTURE, BUILDINGS AND OIL & GAS SECTORS IN THE MEA REGION), SINCE 2011



## MAHMOUD NABIL

ENGINEERING DIRECTOR,  
PH.D, M.SC

MR MAHMOUD IS AN ENGINEERING DIRECTOR WITH EXPERIENCE SPANNING 18 YEARS IN THE DESIGN AND MANAGEMENT ENGINEERING SECTOR



## OSAMA FAWZY

OPERATION MANAGEMENT  
DIRECTOR ( UAE )

30 YEARS OF EXPERIENCE (QHSE/ OPERATIONS AND GENERAL MANAGER), GENERAL MANAGEMENT AND OPERATIONS MANAGEMENT



## SAMIR ANWAR

I&C DIRECTOR

TAREK HAS OVER 45 YEARS OF EXPERIENCE IN OIL AND GAS, PLASTIC, AND DETERGENTS INDUSTRIES.



## AHMED BAKR

MINING SPECIALIST

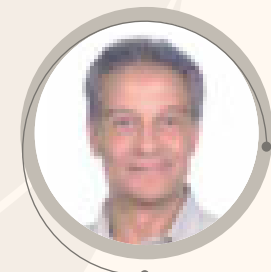
MORE THAN 30 (THIRTY) YEARS OF EXPERIENCE IN THE FIELD OF EXPLORATION, PRODUCTION, TESTING OF PHOSPHATE MINING (OPEN CAST AND UNDERGROUND TUNNELS PRODUCTION) AND ROM (RUN OF MINE).



## TAREK AKL

PROCESS DIRECTOR

HE HAS MORE THAN 30 YEARS OF EXPERIENCE IN PROJECT MANAGEMENT AND ENGINEERING MANAGEMENT.



## HASSAN MOHAMED

MECHANICAL DIRECTOR

FORTY (45) YEARS' EXPERIENCE IN THE DESIGN AND PROJECT MANAGEMENT OF OIL/GAS, REFINERIES.

# Meet our Board of Directors

GREAT TEAMWORK IS THE ONLY WAY WE CREATE THE BREAKTHROUGHS THAT DEFINE OUR CAREERS.



**TAREK ADLY**

**HSE DIRECTOR**

MR MAHMOUD IS AN ENGINEERING DIRECTOR WITH EXPERIENCE SPANNING 18 YEARS IN THE DESIGN AND MANAGEMENT ENGINEERING SECTOR



**BIESHOY WAGDY**

**CONSTRUCTION DIRECTOR**

MORE THAN 15 YEARS EXPERIENCE IN PROJECTS CONSTRUCTION SUPERVISION /DESIGN SPECIFIC TO THE MECHANICAL / PIPING ACTIVITIES IN FIELDS OF OIL& GAS, POWER GENERATION, INDUSTRIAL, AND RESIDENTIAL



**MOHAMED AZZOUNY**

**CIVIL DIRECTOR**

PH.D. CIVIL ENGINEERING STRUCTURE DIVISION



**MURAD EL ORABY**

**PIPING DIRECTOR**

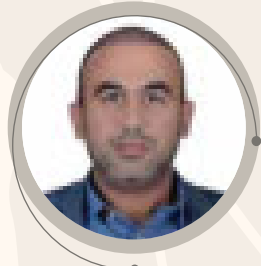
45 YEARS OF EXPERIENCE IN PIPING ENGINEERING ACTIVITIES\COMMENT PROJECT DOCUMENTS



**GAMAL DAWOOD**

**ELECTRICAL DIRECTOR**

40 YEARS OF EXPERIENCE IN OPERATION, MAINTENANCE, AND CONSTRUCTION OF ELECTRICAL & INSTRUMENTATION SYSTEMS/EQUIPMENT, ENGINEERING MANAGEMENT, CONSTRUCTION, INSTALLATIONS, COMMISSIONING OF THE OIL AND GAS FIELDS/PLANTS



**BASEM SANAD**

**BUILDINGS AND INFRASTRUCTURE DIRECTOR**

BASSEM HAS OVER 18 YEARS EXPERIENCE IN THE MEP EXPERIENCES IN MULTI-SKILLS PROJECTS (UAE & QATAR & EGYPT)



**MOHAMED OSAMA**

**PROJECT CONTROL**

000000000000000000



**MOHAMED FAROUK**

**ARCHITECTURE DIRECTOR**

OVER 10 YEARS OF OVERALL EXPERIENCE DESIGNING, DEVELOPING CONCEPT & CONSTRUCTION DRAWINGS. EXTENSIVE EXPERIENCE IN DESIGNING AND MANAGING CONSTRUCTION ACTIVITIES



**AHMED KHAIRY**

**PIPING SECTION HEAD**

TOTAL 15 YEARS WORK EXPERIENCE IN INDUSTRIAL SECTORS, POWER PLANTS, WATER DESALINATION AND GAS SEPARATION WITH MULTINATIONAL EPCM COMPANIES

# Company ORG Chart

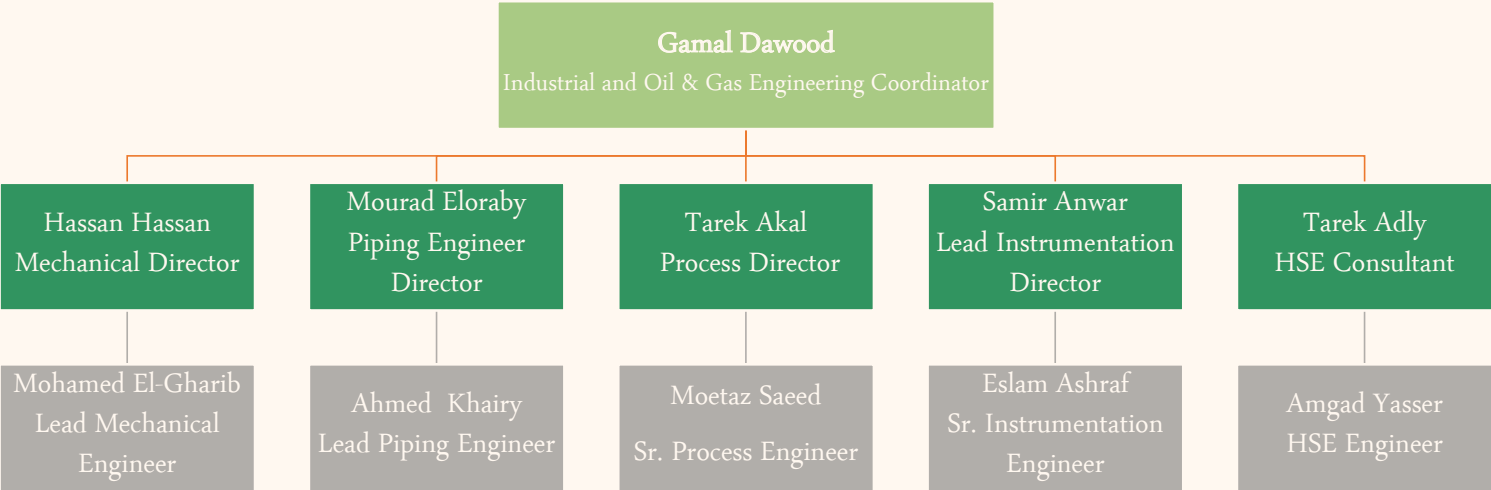
## Company Organization Chart Infrastructure & Buildings Engineering Sector



**80 Employee**

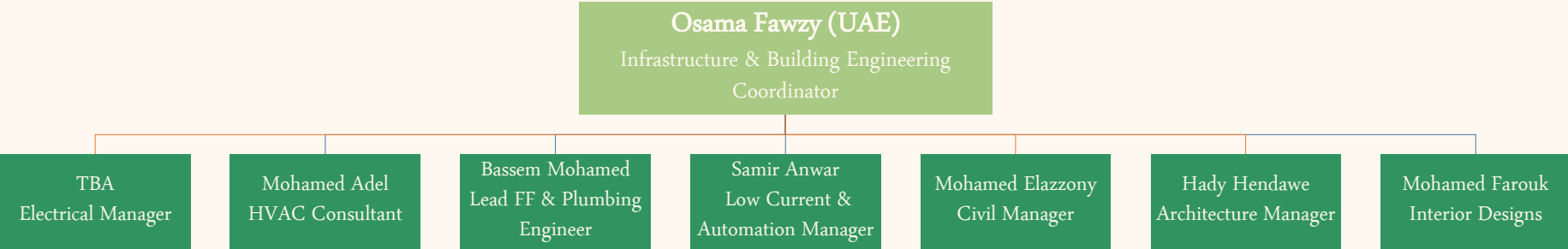
# Company ORG Chart

## Industrial and oil & Gas Engineering Discipline



**21 Employee**

## Buildings and Infrastructure Engineering Discipline



8 Employee

9 Employee

7 Employee

4 Employee

8 Employee

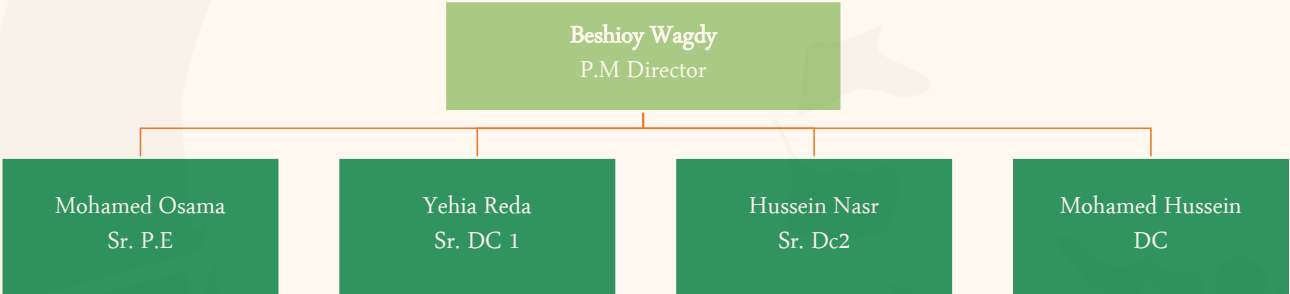
10 Employee

9 Employee

**55 Employee**

# Company ORG Chart

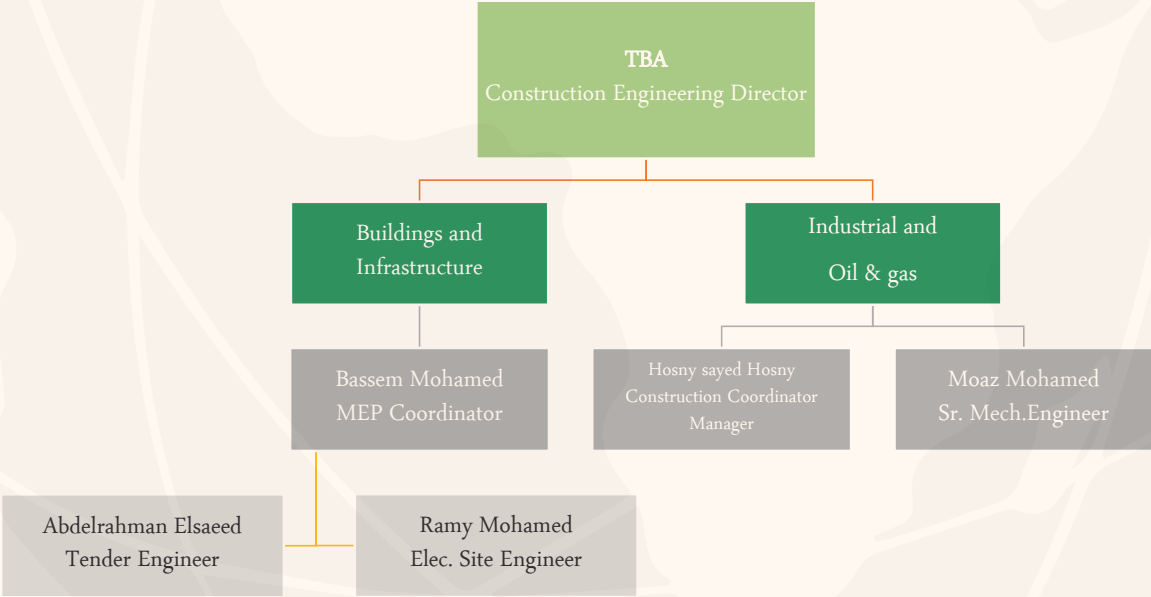
## Project Management Engineering Discipline



**5 Employee**

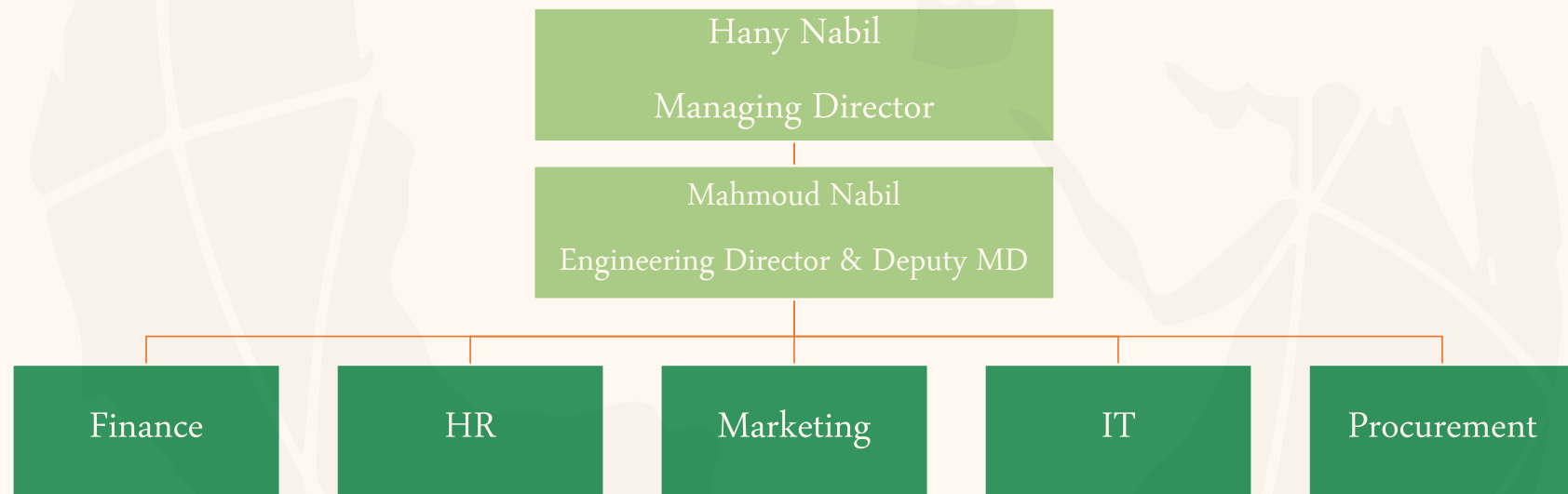
---

## Construction Engineering Discipline



**5 Employee**

# Company ORG Chart



**5 Employee**



A construction site at dusk with several cranes and a large blue graphic element in the upper right corner. The sky is a deep blue with some clouds. The cranes are silhouetted against the sky, and some lights are visible on the cranes. The overall scene is industrial and active.

Diar Consulting Group

## **Business Fields**

**Infrastructure &  
Buildings**

**Industrial and  
Oil & Gas**

# Business Fields

DIAR has provided reliable solutions for different types of projects: Building, infrastructure, Industrial, and Oil & Gas according to international standards.

DIAR services including **Engineering, procurement, and construction to meet our client satisfaction with high quality and minimum cost.** DIAR believes that our quality is the main target for our team to be a competitive company in the world.



CONSULTING



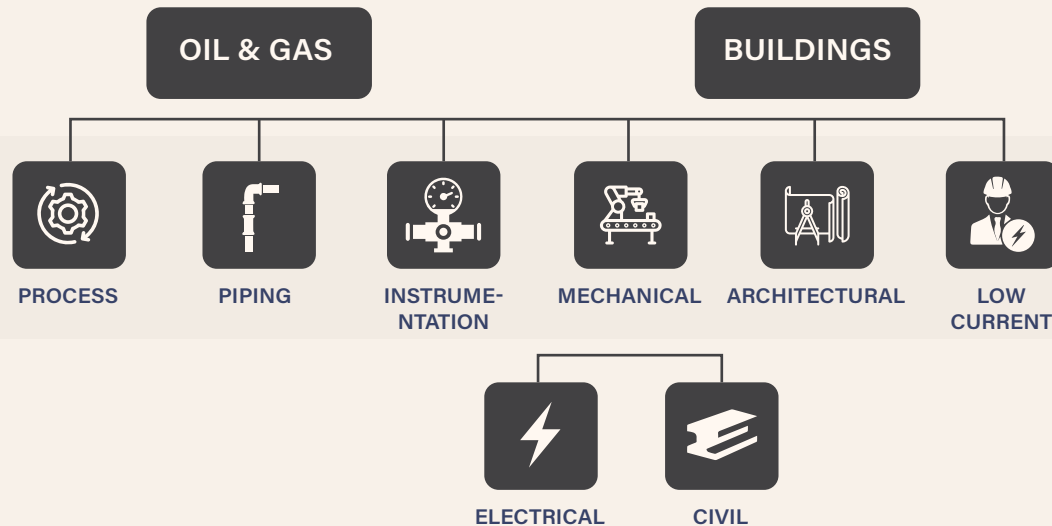
EPC CONTRACTS



PMC MANAGEMENT

# Engineering Disciplines

Diar has a diverse range of engineering fields. Having expertise in those engineering Various fields can provide a comprehensive solution for various projects and industries.



# Engineering Disciplines

Engineering Consultant for Oil&Gas Industrial, Buildings ad Infrastructure

DIAR services including **Engineering, procurement, and construction to meet our client satisfaction with high quality and minimum cost.** DIAR believes that our quality is the main target for our team to be a competitive company in the world.



Since we Started our Business in 2009, Diar always keen to be the Engineering arm for all types of companies and organization in order to drive thier idea and dream to Reality with our 8 magical Elements to success.

INTEGRITY

QUALITY

EXPERIENCE

STANDARDS

SYNERGY

EXPERTISE

# Engineering **Projects Phases**

Engineering Consultant for Oil&Gas Industrial, Buildings ad Infrastructure

DIAR services including Engineering, procurement, and construction to meet our client satisfaction with high quality and minimum cost. DIAR believes that our quality is the main target for our team to be a competitive company in the world.

PHASE 01

## CONCEPT SELECTION AND FEASIBILITY STUDIES

Feasibility Study:

It is an analysis into the viability of an idea. It is the initial design stage to any project or plan.

Concept Selection is an element of the design process. It enables you to pick the idea(s) which best satisfy the Design Specification.

PHASE 02

## CONCEPT DESIGN

It's the point within the development cycle that typically sits between the Project requirements and detailed design.

PHASE 03

## SCHEMATIC

the project team determines the areas, physical requirements and relationships of all the required building spaces and components, then confirms or revises the total building square footage and the total project budget, as well as the project schedule and occupancy dates.

PHASE 04

## DETAILED DESIGN

Detailed engineering design includes the following stages: Checking specifications. Defining subsystems, checking, and assembling parts. Finalizing individual parts and accomplishing technical calculations.

PHASE 05

## TENDER DOCUMENTS

The set of documents prepared by a quantity surveyor to invite bids from contractors, including drawings, specifications, bills of quantities, and contractual terms.

PHASE 06

## IFC

IFC (Issued for Construction) and Shop Drawings play an important role in detailing out information about all components in a construction project. Extracting these drawings can help all involved stakeholders to speed up the project.

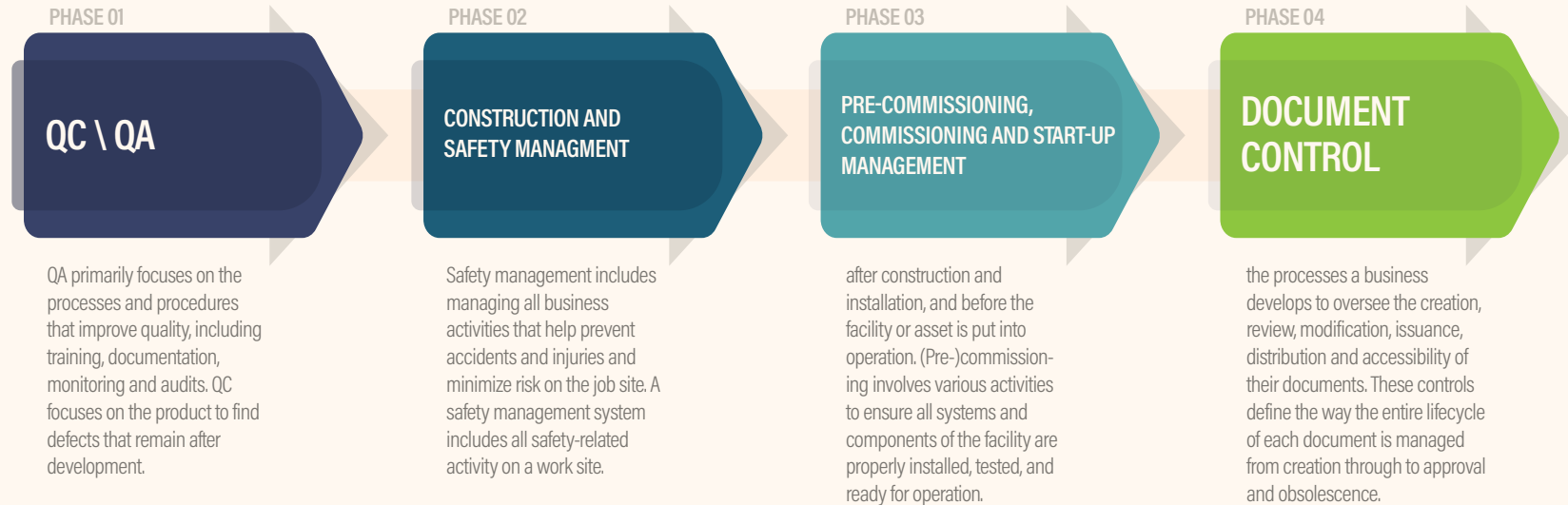
PHASE 07

## PROCUREMENT SUPPORT

EPC contracting is a type of contract in which the contractor is responsible for the design, engineering, procurement, and construction supervision of a project

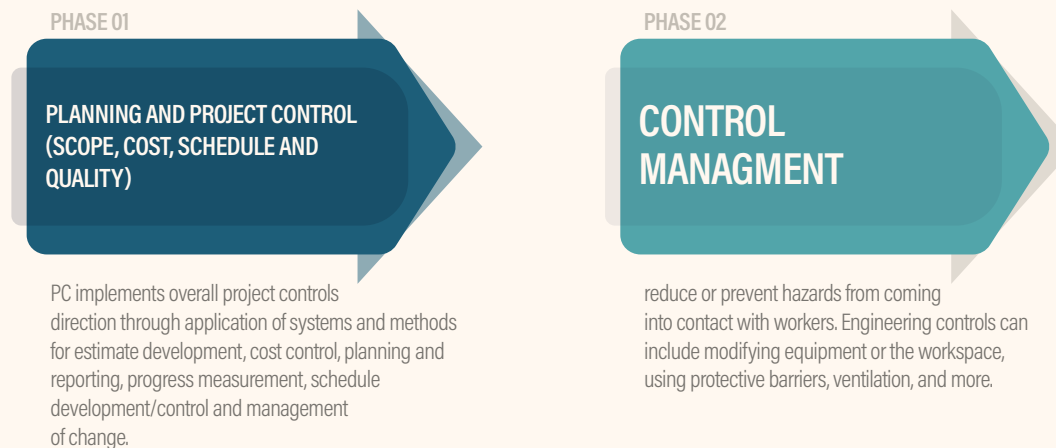
# Engineering Projects Phases

## Construction Management and Site Supervision



# Engineering Projects Phases

## Project Management Consultation



## OUR ENGINEERING DISCIPLINES-DELIVERABLES



DESIGNING, DEVELOPING, AND IMPLEMENTING EFFICIENT AND SAFE PROCESSES

### 1. PROCESS

- PFD.
- P&ID.
- Process equipment specifications.
- Equipment datasheets.
- HYSIS simulation.
- Simulation reports.
- HAZOP & HAZID.
- HIPS.
- Process Philosophy.
- Basis of Design.

### 2. PIPING AND PIPELINE:

- General arrangement layouts.
- Plot plan.
- Piping isometrics (ISOs).
- Plant 3D modeling.
- Piping specifications for materials, paintings, etc.
- Stress analysis.
- Pipeline profile.
- Standard and special supports design.
- Construction support.
- Laser Scanning & 3D Modeling



PIPING AND PIPELINE ENGINEERING



### 3. INSTRUMENT & CONTROL ENGINEERING

- Field instrumentation
- Process controls system such as: pneumatic, hydraulic, electronic & microprocessor (PLC & DCS), etc....
- Safety related systems; ESD, F&G and HIPPS, etc...
- SCADA systems such as fiber optic, micro wave, satellite, etc....
- Custody transfer metering systems
- Pipeline management systems
- Automatic tank gauging systems
- Oil & Gas wellhead control systems
- Asset Integrity Management For ICSS and - plant Control Components
- Subsea Hydraulic network analysis
- Subsea Power distribution analysis

DESIGN, ANALYSIS,  
MANUFACTURING, AND MAINTENANCE  
OF MECHANICAL SYSTEMS

## 4. MECHANICAL

- Tanks detailed and fabrication drawings.
- Static Equipment detailed and fabrication design. (Vessels, tanks)
- Machinery equipment specifications, datasheets & material requisitions.
- Cooling Load Estimation.
- Duct Design.
- Equipment selection.
- Chilled Water piping.
- Pump head & flow calculation.
- Water tanks calculation.
- Rain water and drainage design.
- Electrical Water Heaters design.
- Designed as a green building for LEED Certification.

## 5. ELECTRICAL ENGINEERING

- Electrical Systems' Analytical and Special studies
- Grid-Connected Power Generation Plants.
- High Voltage Grid-Connected Substations
- MV Overhead Transmission Lines
- Island and Field Interconnected Power Generation Plants.
- MV and LV Power Distribution Systems (Indoor, - Outdoor and Explosion Proof)
- Electrical Prefabricated Substations, Modules and Kiosks.
- AC & DC UPS systems
- Power Factor Improvement capacitor banks.
- Solar Power units
- Cabling and Raceways Systems
- Lighting Systems
- Grounding and Lightning Systems
- Navigational Aids
- Electrical Heat Tracing

## 6. LOW CURRENT

- Data.
- VOIP Telephony System or conventional PABX system.
- IPTV or MATV system.
- Audio visual system.
- Public address system.
- Fire alarm systems.
- Car parking security system.
- IP-CCTV or conventional CCTV.
- Access Control system.
- Digital Signage system.
- Master Clock system.
- Building Management System BMS.



## 7. ARCHITECTURE

Architecture and design consultancy focusing on strategy, architecture and design for corporate, public sector and education clients for new build, refurbishment and heritage projects.

Our team has wealth of experience and comprises architects, interior designers, analysts, technicians, graphic designers and communication experts.

We cover all architectural work stages, adding further value with our extensive analytical tools and experience.



- Architectural Design
- Interior Design.
- Detailed Design.
- Working Drawing.
- 3d Modeling & Rendering.
- CAD Conversion/As Built Drawings.
- Interior Design.
- Detailed Design.
- Working Drawing.
- 3d Modeling & Rendering.
- CAD Conversion/As Built Drawings.



## 8. CIVIL

Our designers and technicians can provide quality engineering, and a broad base of practical experience for your project. Presently, we can undertake the following:-

Civil...

- Foundation design, analysis and details for equipment/machinery, storage tank, bunkers and silos, bridge,
- Industrial plant structures, tunnels, ducts, utility towers, galleries and walkways, pipe racks and general structures.
- Reinforcement detailing and bar bending schedules.
- RCC drawings, shuttering plans
- Water supply and distribution plans and details
- Reservoirs & water tank details.



## REVIT SUPPORT

- Diar Consulting Group is a group of (BIM Managers, BIM Consultants, BIM programmers, Technical support, Specialists, Autodesk certified professional users).
- Diar are ready to provide (BIM Training, BIM Technical support, BIM Implementation )
- Methodology: BIM Consultancy, BIM Modeling for BIM users and companies.
- Also we are publisher on Autodesk store.
- Diar Offers a Free BIM Presentations for the new users & companies.
- Our services include Autodesk Revit and Autodesk Navisworks.
- Manage software products including but not limited to incorporating new version releases and customization of the product
- Manage the implementation of supporting software for ,BIM
- Evaluate new BIM related software and technologies
- Stay informed on best practices for use of Revit BIM.
- Stay informed on other BIM related Software and how they work with Revit
- Installation and support of related BIM software.

LEARN.  
PERFORM.  
RESULTS.

Certificate of Completion

Autodesk  
Autodesk, Inc.  
3501 Market Street  
San Bruno, CA 94066  
USA

Autodesk  
Autodesk, Inc.  
3501 Market Street  
San Bruno, CA 94066  
USA

Autodesk  
Autodesk, Inc.  
3501 Market Street  
San Bruno, CA 94066  
USA

Autodesk  
Autodesk, Inc.  
3501 Market Street  
San Bruno, CA 94066  
USA



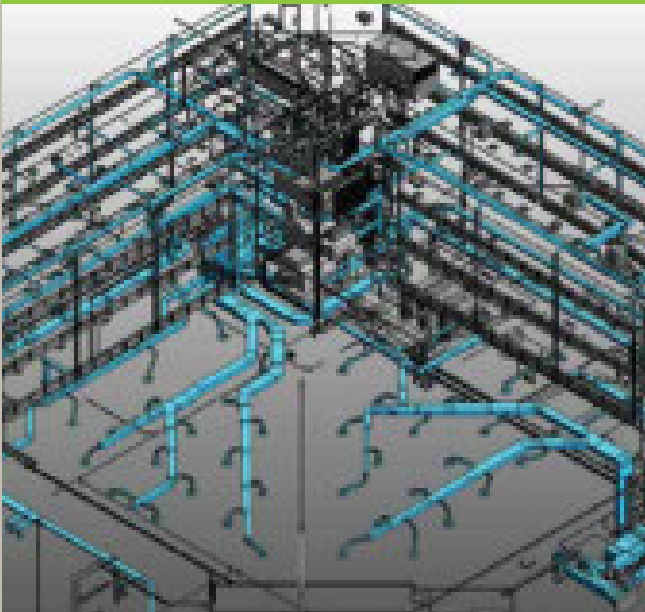


## 9. LANDSCAPE

- Site survey and analysis
- Program of needs
- Conceptual design sketches and models
- Landscape construction plans
- Plant lists and specifications
- Material specifications
- Lighting plans
- Signage and wayfinding plans
- Sustainability reports
- Construction details and specifications (shop drawings)
- 2d & 3D models and renderings
- As-built drawings

## 10. MEP

- Mechanical drawings and specifications: Detailed plans for HVAC systems, ductwork, piping, equipment selection, and control systems.
- Electrical drawings and specifications: Comprehensive plans for power distribution, lighting, communication systems, and fire alarm systems.
- Plumbing drawings and specifications: Detailed plans for water supply, drainage, waste disposal, and sanitary systems
- 3D models and simulations: Visual representations of the MEP systems and simulations of their performance.



## 11. HSE

1. HSE Plan which identifies potential hazards, assesses risks, and defines control measures to minimize them.
2. Risk Assessment also includes recommendations for risk mitigation and control.
3. Safe Work Procedures (SWPs) They include information on personal protective equipment (PPE), tools and equipment use, and emergency procedures.
4. Environmental Impact Assessment (EIA)
5. Emergency Response Plan
6. Training Materials
7. Permits and Approvals
8. Monitoring and Reporting

**The specific HSE engineering deliverables required for a project will vary depending on the project's size, complexity, and location.**

## OUR PMC DELIVERABLES

### 1. Planning Aspect

- Develop Master time schedule
- Monthly update, and one month look ahead
- Develop monthly report
- Weekly report for all staff including the critical activities should be finish next week, and the delayed activities for current week
- Develop reports for cause of delays and how to crash
- Develop crashed time schedule if needed

### 2. Cost control Aspect

- Develop S- Curve, and expected cash Flow
- Develop cost control system , as log for all subcontractors and all activity will performed in house and estimate cost for each items
- Identify target cost
- Update cost estimate and calculate variance of cost
- Make cost analysis and develop corrective actions
- Develop monthly cost report
- Create all cost indexes, SPI, CPI, ETC, EAC
- Analysis all variation orders

### 3. Resource Management Aspect

- Resource allocated for activities (equipment& labor & material)
- Managing the resource over project life

### 4. Contract Administration Aspect

- Review contract terms and identify all obligations
- Identify financial and contractual commitment
- Develop delay analysis and time impact analysis
- Prepare all contractual litters
- Respond for all consultant contractual litters
- Monitors and alarm for all potential claims
- Prepare claim document and develop all claims





## QUALITY, ENVIRONMENTAL, HEALTH & SAFETY MANAGEMENT SYSTEM



Out of international/national interest of the quality, environment, and occupational health & safety and in line with Egypt's vision 2030 for achieving sustainable development and the company's interest with the customer's satisfaction and continual improvement, Diar has the leadership in obtaining certificates of international standards for:

These certifications demonstrate Diar's commitment to meeting international standards in these areas and ensuring the well-being of its employees, customers, and the environment. By obtaining these certificates, Diar aims to enhance its reputation, attract more customers, and contribute to Egypt's vision of sustainable development.

- Quality Management Systems (ISO 9001)
- Environmental Management Systems (ISO 14001)
- Occupational Health & Safety Management Systems (ISO 45001)

**The implementation of the requirements of these international standards was effectively considered in all of the company's projects and activities in all stages (design, procurement and construction supervision) through an integrated management system to monitor, evaluate and improve Diar performance in the Quality, Environmental & Safety and Customer Support Management Systems.**

---



# DIAR PROJECTS

**PMC** (PROJECT MANAGEMENT CONSULTING)  
**BUILDINGS AND INFRASTRUCTURE**

# Project Management Consulting Projects ....



## **Project Management Consulting Industrial and (oil & Gas)**

### **1- El Shohada New Hospital - El Shohada City**

The establishment of the New Shohdaa Hospital on an area of approximately 21,000 square meters, with a financial appropriation of half a billion pounds, as the Undersecretary of the Ministry of Health indicated that the designs for the hospital are being prepared to start implementation.

### **2- Dry Port 6 th October**

The company intended to develop, construct and operate, and maintenance of the 6th of October Dry Port ("DP6"), the first inland dry port in Egypt in the city of 6th of October, west of Cairo (signed on 09 September 2021).

# New SHOHDA

---

## Hospital construction Project

The establishment of the New Martyrs Hospital on an area of approximately 21,000 square meters, with a financial appropriation of half a billion pounds, as the Undersecretary of the Ministry of Health indicated that the designs for the hospital are being prepared to start implementation.



The new hospital will be established with a financial appropriation of half a billion pounds on an area of approximately 20,800 square meters, which is scheduled to be included in the comprehensive health insurance system, and to provide services to the people of the city of Shahdaa and all the 27 villages of the center.

# New SHOHDA

---

## Hospital construction Project



### Diar Scope of Work was the Project (PMC)

- **Consultant of the main contractor.**
- **Main coordinator between ministry of health, owner consultant and project contractor and designer.**
- **Designer reviewer for all disciplines as of architectural, civil and MEP.**
- **Supervisor consultant for all construction works at site.**

- **Project development and planning:** Defining project scope, developing budgets, establishing schedules, and identifying potential risks.
- **Design management:** Reviewing architectural and engineering plans, ensuring compliance with regulatory standards.
- **Procurement strategy development:** Assisting with bid packages, vendor selection, and contract negotiation for construction materials, equipment, and services.
- **Permitting and approvals:** Navigating the complex regulatory landscape and obtaining necessary permits and approvals for construction.
- **Construction management:** Overseeing construction activities, managing contractors, subcontractors, and suppliers.
- **Schedule and budget monitoring**
- **Quality control and risk management:** Implementing quality control measures.
- **Communication and stakeholder management:** Facilitating communication between all project stakeholders, including hospital staff, contractors, regulatory bodies, and the community.

# Dry Port 6th October

---

OCTOBER DRY PORT COMPANY (A JOINT STOCK COMPANY ESTABLISHED IN EGYPT TO FINANCE THE DESIGN)

## FIRST DRY PORT IN EGYPT



The company intended to develop, construct and operate, and maintenance of the 6th of October Dry Port ("DP6"), the first inland dry port in Egypt in the city of 6th of October, west of Cairo (signed on 09 September 2021).

The Project is the City's "trigger investment" under EBRD Green Cities Framework 2 Window 2 ("GrCF2 W2") formally initiating 6th of October's participation in the programme and enabling the start of the development of the Green City Action Plan ("GCAP") with the New Urban Communities Authority ("NUCA") for the 6th of October City.



# Dry Port 6th October

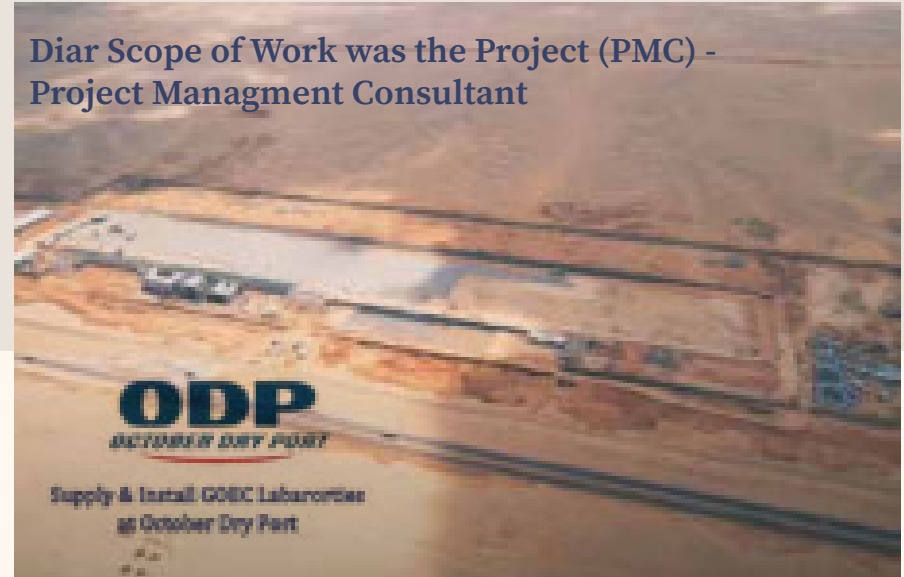
USD 176 Million to Construct First Dry Port at 6th of October City

## Project Overview:

The project involves the supply and installation of GOEC (General Organization for Export and Import Control) laboratories within the October Dry Port located in 6th of October City. The specific location of the project is Building no 3, Floor 3, which has a total area of 700 m2. The floor has been divided into different zones to accommodate the specific requirements of the laboratories, offices, and service corridors.

## Project Scope of Work:

The scope of work includes demolition, masonry works, flooring and wall tiles installation, installation of wooden doors, marble flooring, false ceiling, and mechanical and electrical works. These tasks encompass clearing the area, constructing walls, installing flooring and wall tiles, setting up wooden doors, incorporating marble flooring, installing false ceilings, and implementing HVAC and electrical systems.



A large red tower crane is the central focus of the image, extending from the bottom towards the top. The crane's lattice structure is clearly visible, and it is set against a clear, light blue sky. The crane's jib extends diagonally across the frame. The overall scene is a construction site, likely for a residential or infrastructure project.

# DIAR PROJECTS

**RUNNING RESIDENTIAL PROJECTS**  
BUILDINGS AND INFRASTRUCTURE

## RUNNING PROJECTS IN KSA

# Y OFFICE TOWER, SAUDI ARABIA, LUSAIL

PRIME Company is developing its premises on the Saudi Arabia and intending to make the mentioned offices tower as a Prevailing offices facilities and technology in the market. It is located in lusail city; The project information and statistics are given below;

Name of the Project : Y OFFICE TOWER

Owner : PRIME company

Location : Saudi arabia

Type of Development : 6 Basements + Ground +mezzanine + 25 floors + roof

Built Up- Area : 27,122 m2 excluding roof areas

**The project is endeavored to perform the detailed design for the floors including Architectural, civil and MEP design packages in the building and site layout.**

### Scope of Work:

Stage 01- Concept Design stage

Design concept for different offices spaces

- Design Criteria Report for all related MEP Disciplines
- Updated Design Criteria Report for (Power service distribution, Lighting, Telephones, Fire detections and alarms, Security Systems, Electronic communications, Special electrical systems, Lighting Lux calculations.)

Stage 02- Detailed Design Stage  
Architectural:

- Architectural layout proposal.
- Finishing and furniture layout.
- Celling layout.

Civil:

- Design Calculations.
- Structural detailed layouts
- Civil study and design report c) Electrical:
  - Design Calculations
  - Small Power Distribution Layouts
  - Mechanical Power & Main Feeder Layout
  - Lighting Layouts
  - Earthing & Lightning Protection Systems
  - Panel board Schedules
  - Single Line Diagrams.
  - Schedules of Lighting Fixtures



## RUNNING PROJECTS IN KSA

# Y OFFICE TOWER, SAUDI ARABIA, LUSAIL



### Low Current:

- Fire Alarm Detection System
- Telephone & Data Network
- Access control system
- Public address system
- CCTV system
- Low Current System Risers

### Mechanical:

- Mechanical Design Calculations
- Water Supply Layouts & Details
- Fire Fighting Layouts & Details
- Drainage Layouts & Details
- HVAC Duct Layout
- HVAC Chilled water Pipes Layout
- Typical Details
- Equipment Schedules & Selection

Stage 03 - Tender Documents Upon the approval of detailed design package, the Consultant shall proceed to prepare the tender documents package for review and approval by Medical Group team.



## RUNNING PROJECTS IN YEMEN

# AL BEYAA AL MOSTAFWEYA YEMEN-HADRMAUT



Developing its premises on the Yemen and intending to make the compound as a Prevailing residences facilities and technology in the market. It is located in Hadramout city; The project information and statistics are given below;

Name of the Project : ALBEYAA ALMOSTA-FAWEYA

Owner : Al SAKEENA

Location : Yemen

Type of Development : residential compound

Built Up- Area : 16,200 m<sup>2</sup>

The offices space including the following sections:

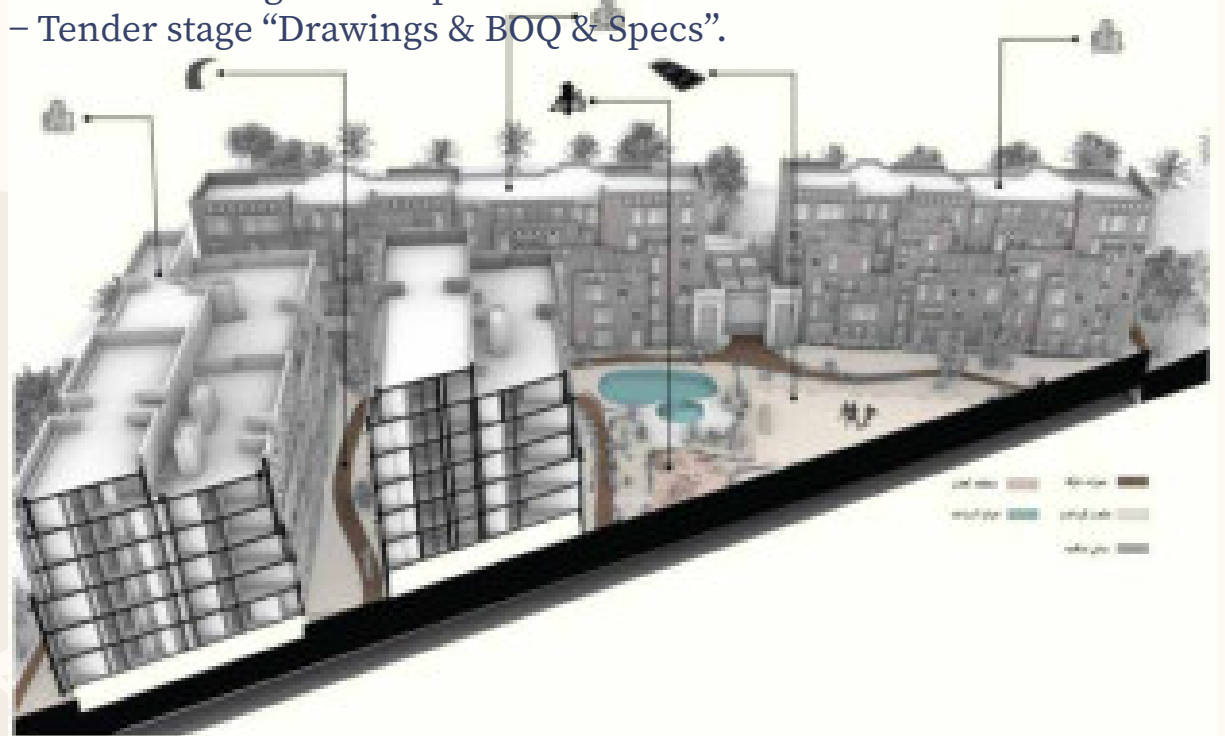
1. 14 residential buildings.
2. Hotel and mosque.
3. Infra structure works.

The project is endeavored to perform the detailed design for the floors including Architectural, civil and MEP design packages in the building and site layout.

### SCOPE OF WORK

Project scope the "Design Services" form the Concept to Tender stages as per the requirements of the client mentioned in this offer. Moreover, the required offer to include the estimated Design Stage duration – (project schedule) in weeks, The consultancy services are including the following:

- Concept design review and modify
- Detailed Design Development.
- Tender stage “Drawings & BOQ & Specs”.





# DIAR PROJECTS

## **ARCHITECTURE PROJECTS**

**Residential, Commercial, Administrative**

# Villa Mr\Ahmed

## Nabil (Bahrain) (Diar El Muharraq)

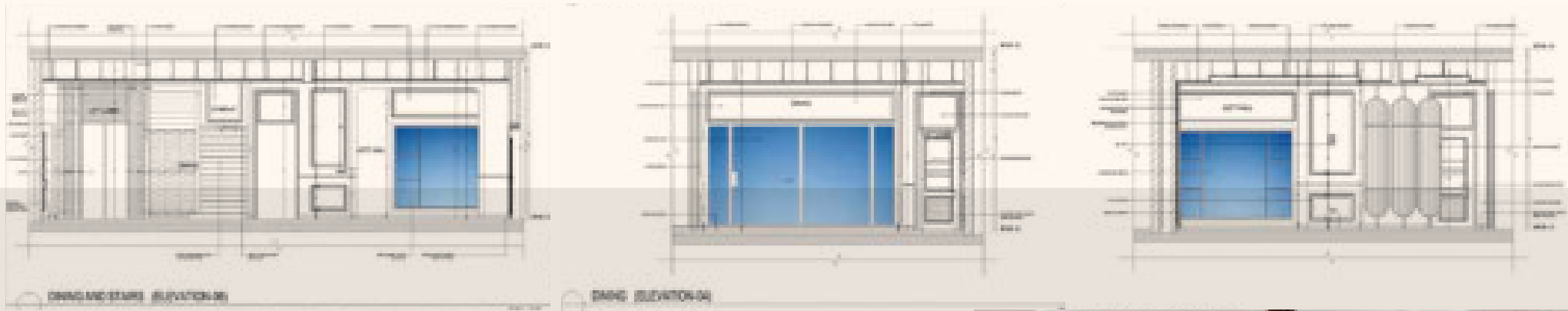
Diar scope of work is to perform and deliver the complete following items:

- Architecture Design Package as per Construction requirements
- Architecture Shop drawings

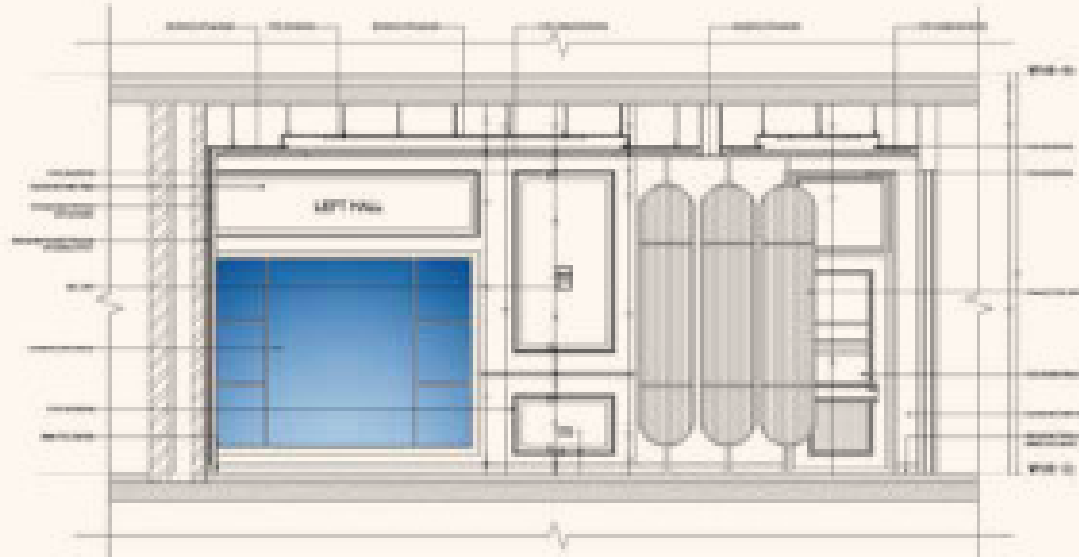
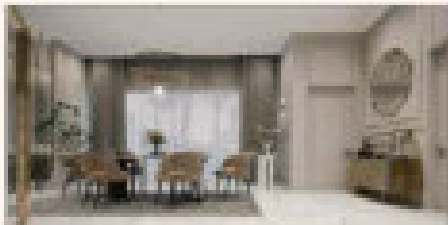
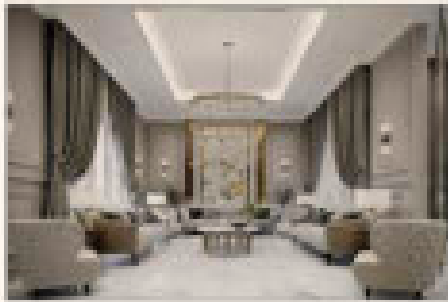


Interior Shots

# Villa Mr\Ahmed Nabil (Bahrain) (Diar El Muharraq)








LEFT SALON (ELEVATION-03)

SCALE 1:200



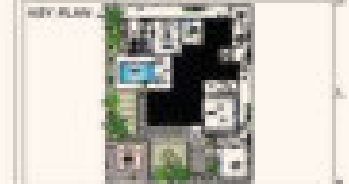
DINING (ELEVATION-04)

SCALE 1:200

CLIENT :  


PROJECT :  
 Villa Al-Muhammed Road  
 (Opposite Al-Muhammed Road)  
 (Doha)

ARCHITECTURE CONSULTANT :  
  
 Diar Architecture  
 P.O. Box 11111, Doha, Qatar  
 Phone: +974 4422 2222  
 Email: info@diar.qa



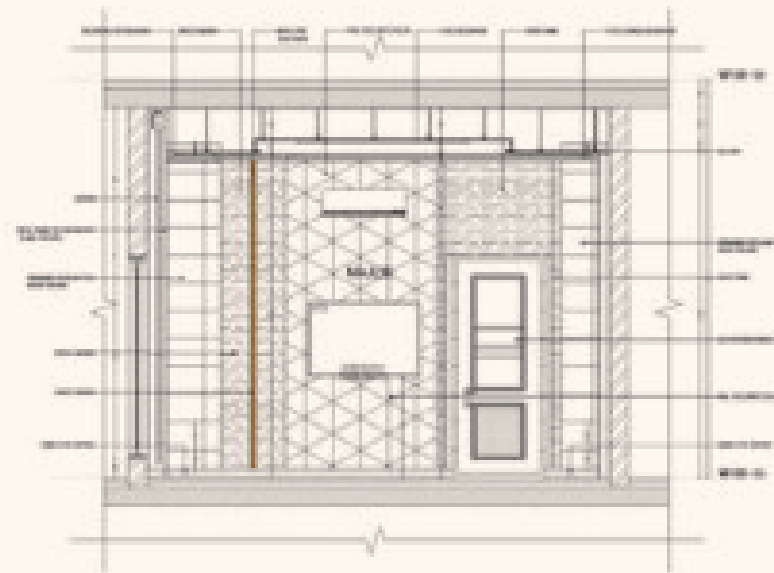
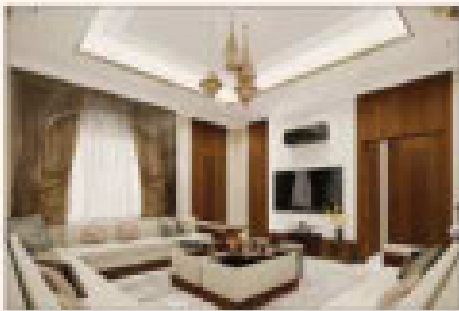
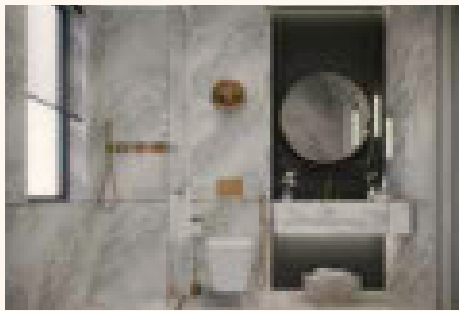
PROJECT ORIENTATION :



NOTES :

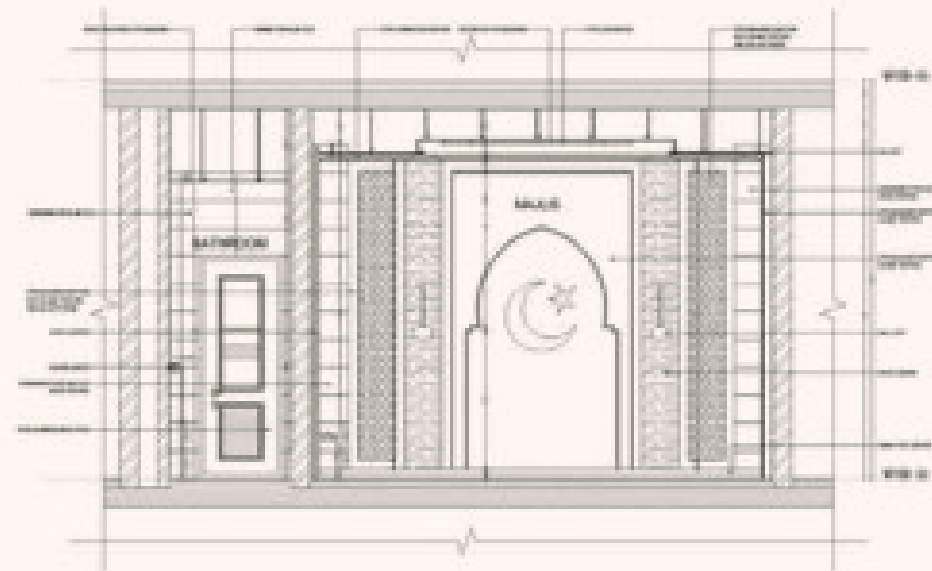
NO.	REVISION

Villa Al-Muhammed Road  
 (Opposite Al-Muhammed Road)  
 (Doha)  
 Architecture  
**GROUND FLOOR**  
**(LEFT SALON, DINING AND KITCHEN)**  
 ARCHITECTURE CONSULTANT :  
 DIAR ARCHITECTURE  
 P.O. Box 11111, Doha, Qatar  
 Phone: +974 4422 2222  
 Email: info@diar.qa



MAJLIS ELEVATION-01

SCALE 1:200



MAJLIS ELEVATION-02

SCALE 1:200

CLIENT :



PROJECT :

VILLA AL-AMMAN 1000  
(JALAN AL-KHAYRAT)  
(BANDAR)

ARCH CONSULTANT :



KEY PLAN :



PROJECT ORIENTATION :

NOTES :

Villa Al-Amman 1000  
(JALAN AL-KHAYRAT)  
(BANDAR)

Architecture

GROUND FLOOR  
(MAJLIS)

DATE: 2023/05/01  
DRAWN: [Name]  
CHECK: [Name]

# Luxury Villa Bahrain

---

Diar scope of work is to perform and deliver the complete following items:

- **Architecture Design Package as per Construction requirements**
- Architecture **exterior shots**





# Riyad Private Villa, KSA

Private Luxurious Villa Located in Saudi Arabia

## Diar Scope was the Engineering Design Package:

- Detailed Engineering Drawings: The engineer will produce detailed construction drawings for all structural elements, including foundations, walls, floors, roofs, and staircases
- Mechanical, Electrical, and Plumbing (MEP) Design: The engineer will design the MEP systems for the villa, including heating, ventilation, air conditioning, plumbing, electrical wiring, and lighting.

RIYAD PRIVATE VILLA,  
FIRST FLOOR PLAN



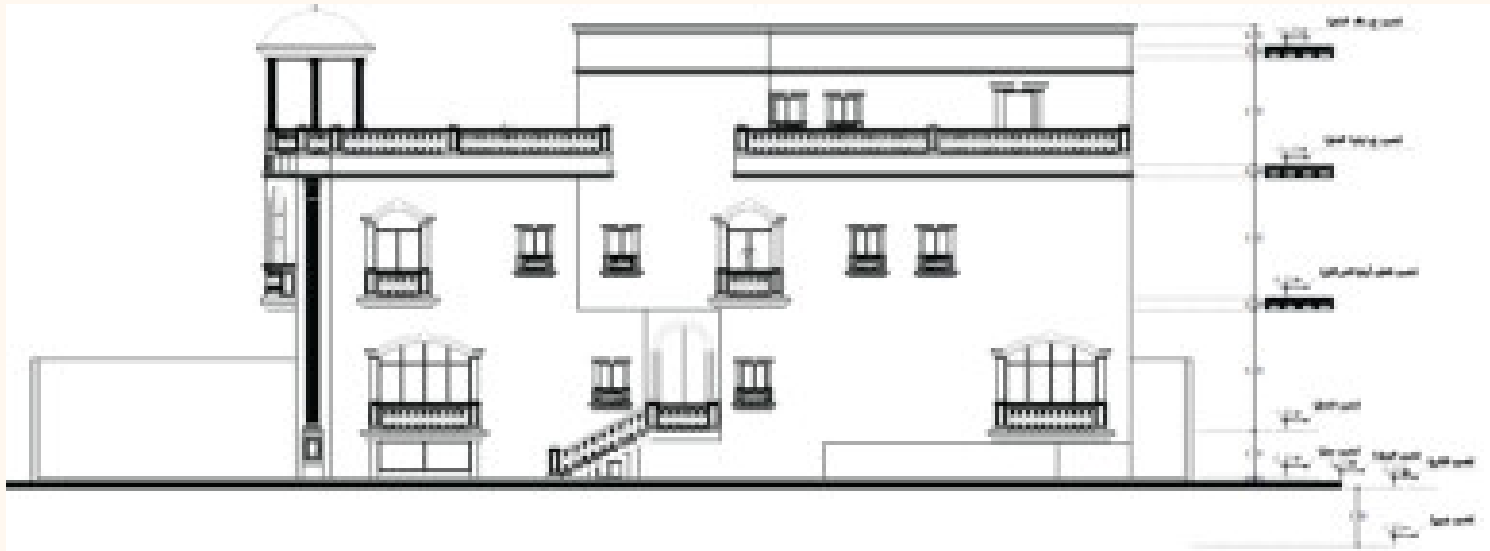
RIYAD PRIVATE VILLA,  
SITE PLAN



- Structural Calculations and Analysis: The engineer will perform structural calculations to ensure the building can safely withstand the dead loads (permanent weight) and live loads (occupancy and environmental loads).
- In addition to the Landscape Design for the Villa Garden.

# Villa ElGuhany, KSA

Private Luxurious Villa Located in Saudi Arabia

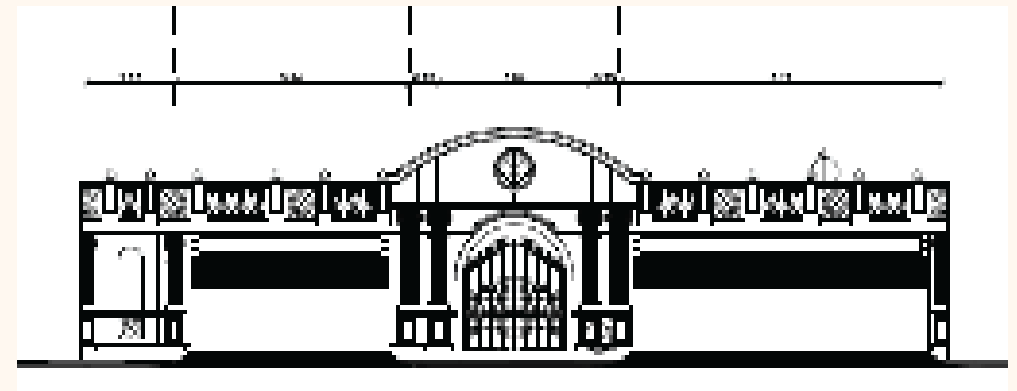


- Equipment Selection: Specifying the types and models of MEP equipment to be used, based on factors like efficiency, budget, and aesthetics.
- Lighting Control Systems: Designing and installing lighting control systems for mood, security, and energy efficiency.

Owner:  
Adel Mohamed El Guhany  
Location:  
Saudi Arabia

## Diar Scope was the MEP Engineering Design Package for the Project

- Plumbing: Water supply and distribution, drainage and waste systems, sanitary fixtures, and hot water systems.
- Electrical: Power distribution, lighting design, grounding and bonding, communication systems (phone, internet, etc.), and home automation systems (if desired).
- HVAC: Heating, ventilation, and air conditioning systems, considering factors like climate, building size, and occupant needs.



# Marsa Alam Compound

Centamin (SGM)-Marsa Alam Compound



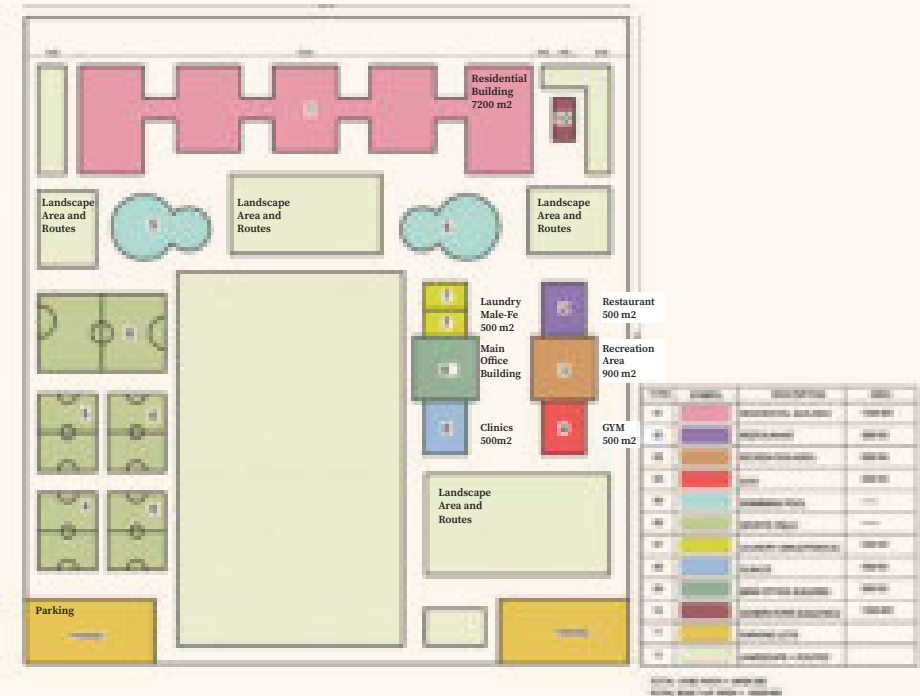
## The Project Brief:

- Centamin (SGM)-Sukari Golden Mines has invited Diar Consulting Group to perform Architectural and Civil works for their Marsa Allam company compound.

- Swimming Pool.
- Sports Field (5 \* Aside dimensions with 4 lanes track).
- Laundry (to be separated by Male / Female).
- Clinic.
- Bikes routes (3 \* lanes) around the compound inside perimeter.
- Car Parking (30 Parking lots).
- Generators Area (3 \* Gensets) (Generators' noise to be taken into consideration).
- Main Security Gate and Office including rest area.

Centamin (SGM) are planning on building their company compound at Marsa Allam city with the following requirements:

- A residential building has (256 Double rooms & 178 Single room & 20 VIP room) – with Meeting Room for 20 persons).  
VIP rooms must be partially but not totally separated from other rooms / Meeting room to have a privacy.
- Restaurant (80 \* Persons capacity) with Kitchen (Hot Section, Butcher section, Bakery Section, Salad section, Service tools Section, Fridge Sections, dry Food Storage Section), and food receiving area on the ground floor.
- Recreation Area about 800 m2.
- GYM (21 Machines) including Toilets (Male / Female).



# Dina Farms Shop

---

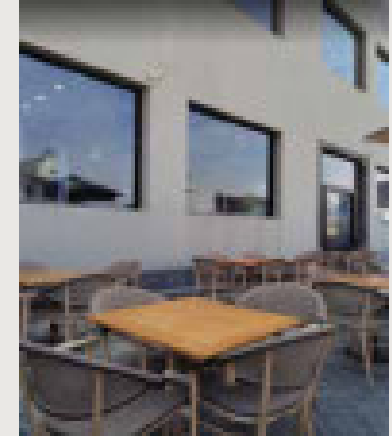
El Sheikh Zayed Branch



## Dina farms Shop El-Sheikh Zayed

Basic and detailed engineering of the new Shop, MEP design for Shop, el sheikh zayed, including the following:

- Electrical engineering
- Mechanical design
- Fire Fighting
- Light current works



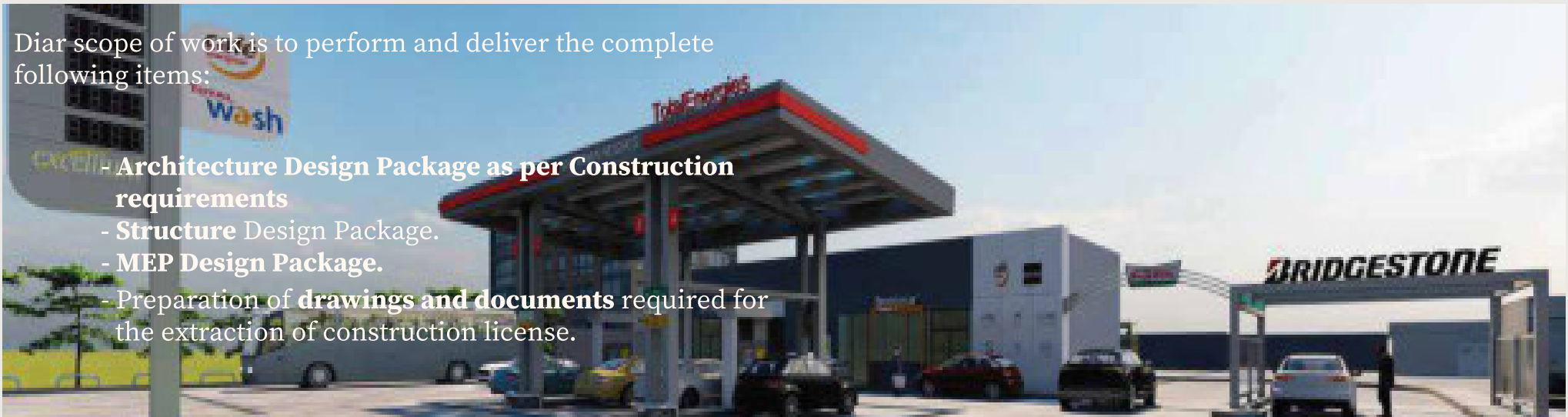
# Total Station Katameya

---

Diar scope of work is to perform and deliver the complete following items:

## Architecture Design Package as per Construction requirements

- **Structure** Design Package.
- **MEP Design** Package.
- Preparation of **drawings and documents** required for the extraction of construction license.





Siemens

SIEMENS



## Dcc Building Control Room

Interior Shots

Siemens intends to install DMS and AMI equipment such as servers, operator consoles, video wall, UPS, batteries and etc., so the existing rooms in both SCC and WADCC shall be renovated.

**Siemens invited Diar to provide a technical and commercial offer for the engineering, procurement, and construction of the subject project.**

- Architecture works
- Electrical Works
- Low current works
- Mechanical works (FF and plumbing)





# DIAR PROJECTS

## ARCHITECTURE PROJECTS

Hospitals and Health-Care Facilities

# Al Mehwar Hospital

6<sup>th</sup> of October City, Giza, Egypt

Diar is the main Consultant of Al Mehwar Hospital that provided consulting Design and Engineering services for the whole project and construction supervision. Our team worked tirelessly to ensure that the hospital was designed and built to the highest standards to match the local and international codes, with a focus on safety, efficiency, and sustainability.

Al Mehwar Hospital located in 6 of October Cairo Egypt on a built-up area 28000 m2 consist of Basement + Ground + 5 floors



Design  
Architecture  
Package  
as per  
Construction  
Requirements

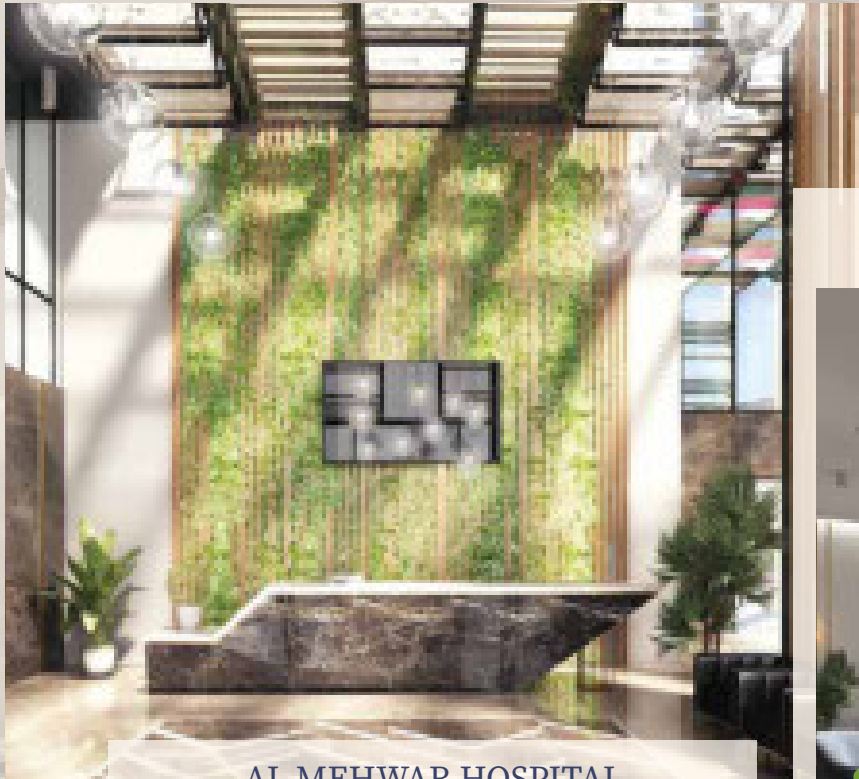
MEP  
Design  
Package.

Tender  
Evaluation

Construction  
Supervision

Procurement  
Support

Diar scope of work is to  
**perform and deliver the complete**  
**Following items:**



**AL MEHWAR HOSPITAL  
MAIN ENTRANCE RECEPTION**



**AL MEHWAR HOSPITAL  
MAIN ENTRANCE  
WAITING AREA**  
Proposal-02



**MAIN ENTRANCE  
WAITING AREA**



AL MEHWAR HOSPITAL

**AL MEHWAR HOSPITAL  
MAIN ENTERANCE  
WAITING AREA  
Proposal-01**



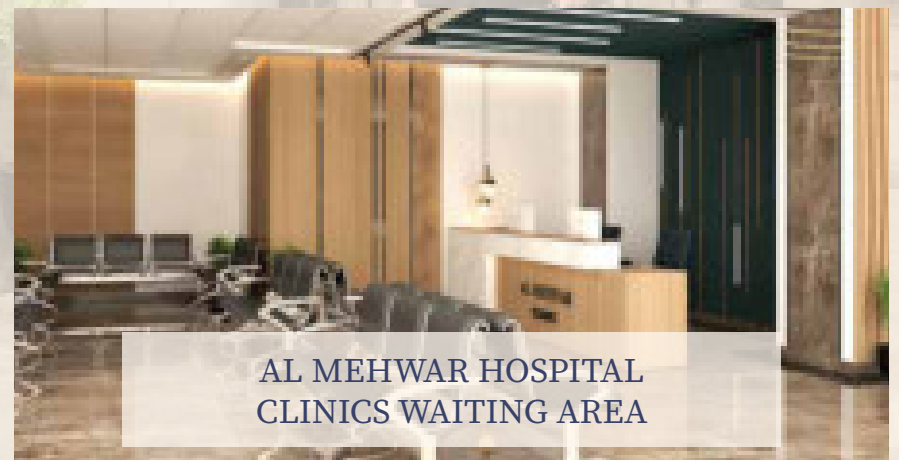
**AL MEHWAR  
HOSPITAL - FIRST  
FLOOR CLINICS**



**AL MEHWAR HOSPITAL  
DENTAL CLINICS**



**AL MEHWAR HOSPITAL  
GROUND FLOOR CLINICS**



**AL MEHWAR HOSPITAL  
CLINICS WAITING AREA**



Patient Room  
3  
Floor

AL MEHWAR HOSPITAL  
LIFT LOBBY



**AL MEHWAR HOSPITAL**  
Exterior  
Shot





**AL MEHWAR HOSPITAL**  
**Main Exterior Shot**

# Andalusia Hospital (New Heart Of Jeddah)

Andalusia group is launching Andalusia Jeddah New Hospital (New Heart of Jeddah) in 2023, The most modern smart hospital in Saudi Arabia - Jeddah and which presents a new concept of healthcare, healing and wellness.  
size: 5000 sqft - 10,000 sqft



Andalusia Hospital in Jeddah is distinguished for its exceptional health experience that combines treatment and well-being for patients. In this hospital, the focus was on the entire patient's journey through the combination of innovative design, modern technology, and distinguished medical services in one place.

# Andalusia Hospital (New Heart Of Jaddah)

The design features of the hospital also include the presence of 4,000 square meters of hanging gardens, a comprehensive entertainment system, and commercial services that meet the needs of patients. It also has integrated medical centers to improve patients' quality of life.

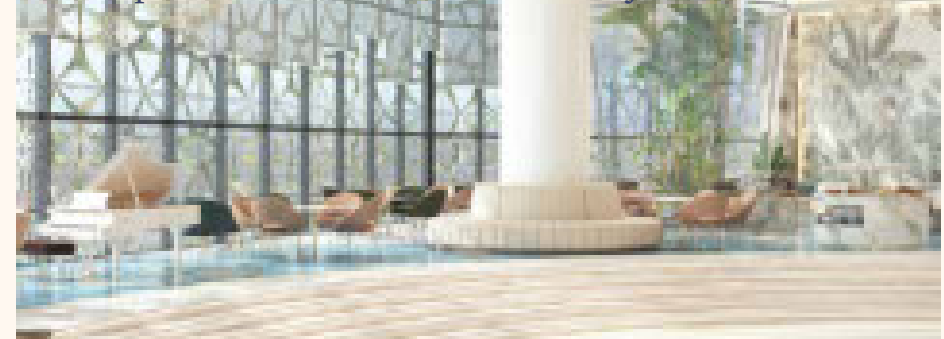


The project involved a comprehensive overhaul of the hospital's design and planning to incorporate smart technologies and advanced healthcare systems. Diar Consulting Group utilized their expertise in architecture, medical planning, and structural engineering to create a state-of-the-art facility that meets the highest standards of modern healthcare.



## Diar Scope of work:

Diar Consulting Group successfully completed the re-design of the architectural, medical, and structural planning, MEP (Mechanical, Electrical, and Plumbing), and prepared the tender package for the Andalusia smart hospital in Jeddah. This remarkable achievement was accomplished within a record time of just 3 months.



# Andalusia Maadi Hospital

Andalusia Group aimed to build a New Extension to Andalusia Hospital in New Maadi to be partially merged later with the existing hospital.

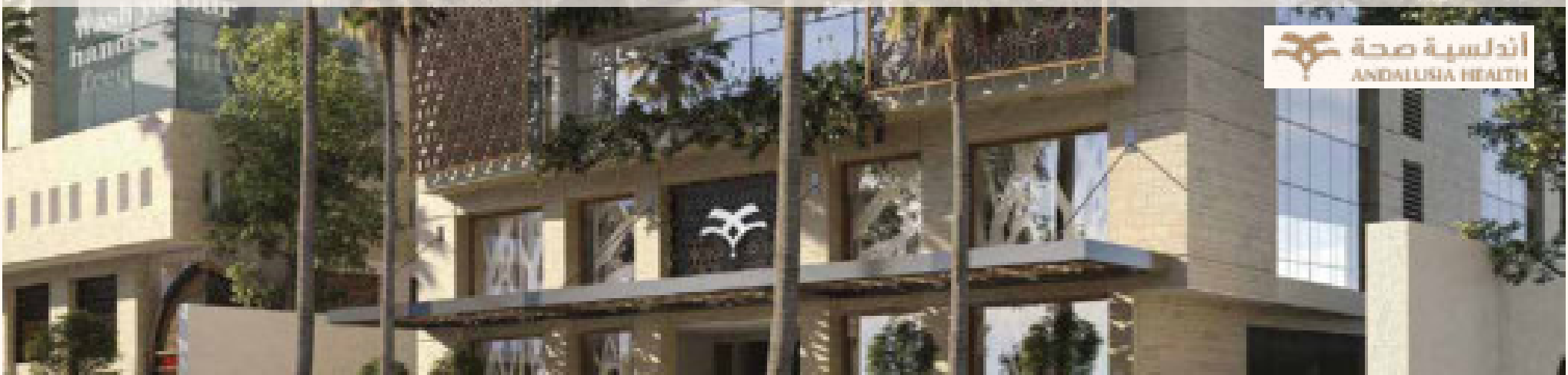
The new standalone building is on total plot area 600 sqm with 4,400 sqm built up area divided on 11 floors (Two Basement floors – Ground Floor – 7 floors – Roof Floor). New Andalusia general hospital after extension will contain 40 beds.



## Diar Scope of work:

MEP Package Design and shop drawing

Diar was responsible for the design, installation, and maintenance of the mechanical, electrical, and plumbing systems in a building. These systems are essential to the safety and comfort of the occupants and must be properly designed and installed to function properly. including Electrical, Low Current System



# Andalusia 6<sup>th</sup> October Hospital



Andalusia is developing its premises on the 6th. Of October City intends to make it a Prevailing treating/ healing facility and technology in the market with a Built Up- Area of 47,000 m2 and a capacity of 291 Beds and 100 Clinics.

The project endeavored to perform the detailed design for buildings including All MEP design packages in the building and site layout.



3D Exterior Shot



### Diar Scope of work:

#### **Mechanical:**

- Update Mechanical Design Calculations
- Update Design brief.
- Stormwater.
- Gas System, if required.
- Water Supply Layouts & Details
- Bathrooms/Kitchens plans
- Fire Fighting Layouts & Details
- Drainage Layouts & Details
- HVAC Layouts & Details
- Equipment Schedules & Selection
- Final waste management plans
- Coordination with other services.



## IVF Medical Center - Dr. Wael El Banna Hospital

Dr.wael Hospital located in maadi, Cairo Egypt .  
Diar scope of work is to perform and deliver the complete following items:

Preparation of drawings and documents required for the extraction of construction license.

Structure Design Package.

MEP Design Package.

Architecture Design Package as per Construction requirements

Basic and detailed engineering of the firefighting System





**IVF Medical Center  
Interior Shot**

# Al Assema Hospital

Al Dokki, Cairo

This project located in AL Dokki, Cairo The client decide to make convert a residential building into a 10th floors hospital with total built up area of 4000 SQM



Diar scope of work:

- **Architecture Design Package as per Construction**
- **Requirements Prepare Soil Report.**
- **Structure Design Package.**
- **MEP Design Package.**
- **Preparation of drawings and documents required for the extraction of construction license**

# Al Moosa Hospital

---

Al Ahsa - Saudi Arabia - Specialized Hospital for Rehabilitation and long-term Care

Al Moosa Specialist Hospital for Rehabilitation and Long-term Care this hospital is designed as a micro-village that embraces nature and the surrounding landscape. The master plan takes its inspiration from the Al-Ahsa region's natural landform of an oasis, while the building design fosters healing through its connections to nature.

- The hospital Consist of 220 beds, 10 operation rooms.
- The building consist of 25 floors, five (5) basements, 2 floors for services (ground and fourth Mezz floors), 18 Floors.
- Note that the above mentioned areas are for each floor.
- The total area far the hospital 50,250 m2



**Diar scope of work:**

- **Review Architecture Design Package as per Construction requirements.**
- **Review Structure Design Package.**
- **MEP Design Package**
- **Preparation of Drawings and documents required for extraction of construction license.**

# Dr. Sulaiman Al Habib Al Khobar, KSA

---

Dr. Sulaiman Al-Habib hospital in Al-Khobar is about **two million square feet**, with a capacity of **600 beds**, **100 of which are for in- tensive care of all kinds**. This hospital includes more than 450 clinics covering all specialties, and includes two towers, each consisting of 16 floors, with a height of more than 63 meters, and parking spaces exceeding 1,600 cars.



Diar scope of work is to Redesign and shop drawings for all MEP systems. The most challenge for this project that the client request to submit the shop drawings for the whole project in just 4 months including the composite plans.

# Misr El Gadida Hospital

---



**Diar Scope of work was to perform and deliver the Complete Following items:**

- Architecture Design Package as per Construction requirements.
- Prepare soil Report.
- Structure Design Package.
- MEP Design Package.
- Preparation of drawings and documents required for the extraction of construction license.

Renovation Project

# Dar El Shefaa Hospital

Dar-elshefa Hospital located in Abbasiya, Cairo Egypt.



**Design:**  
Renovation for three floors including  
Covert 27 beds patient rooms  
floor to 57 beds and  
Renovation scope.

MEP  
Design  
Package.

Basic and detailed  
engineering of  
the Dar Al Shefa  
hospital  
firefighting  
System

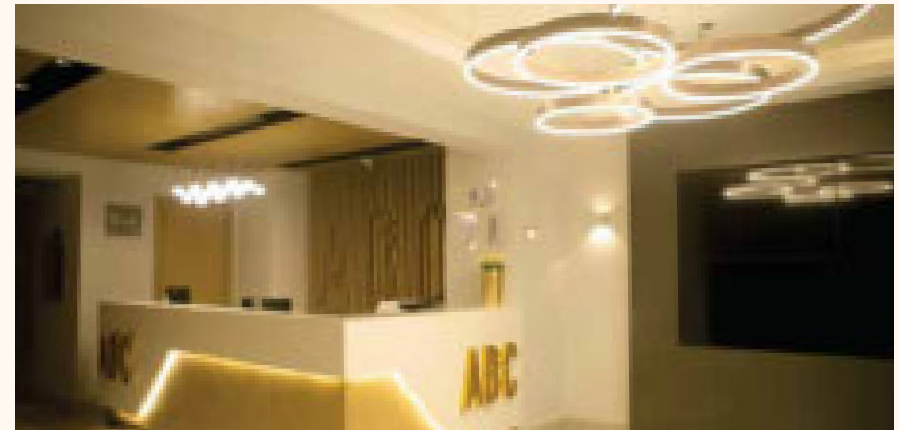
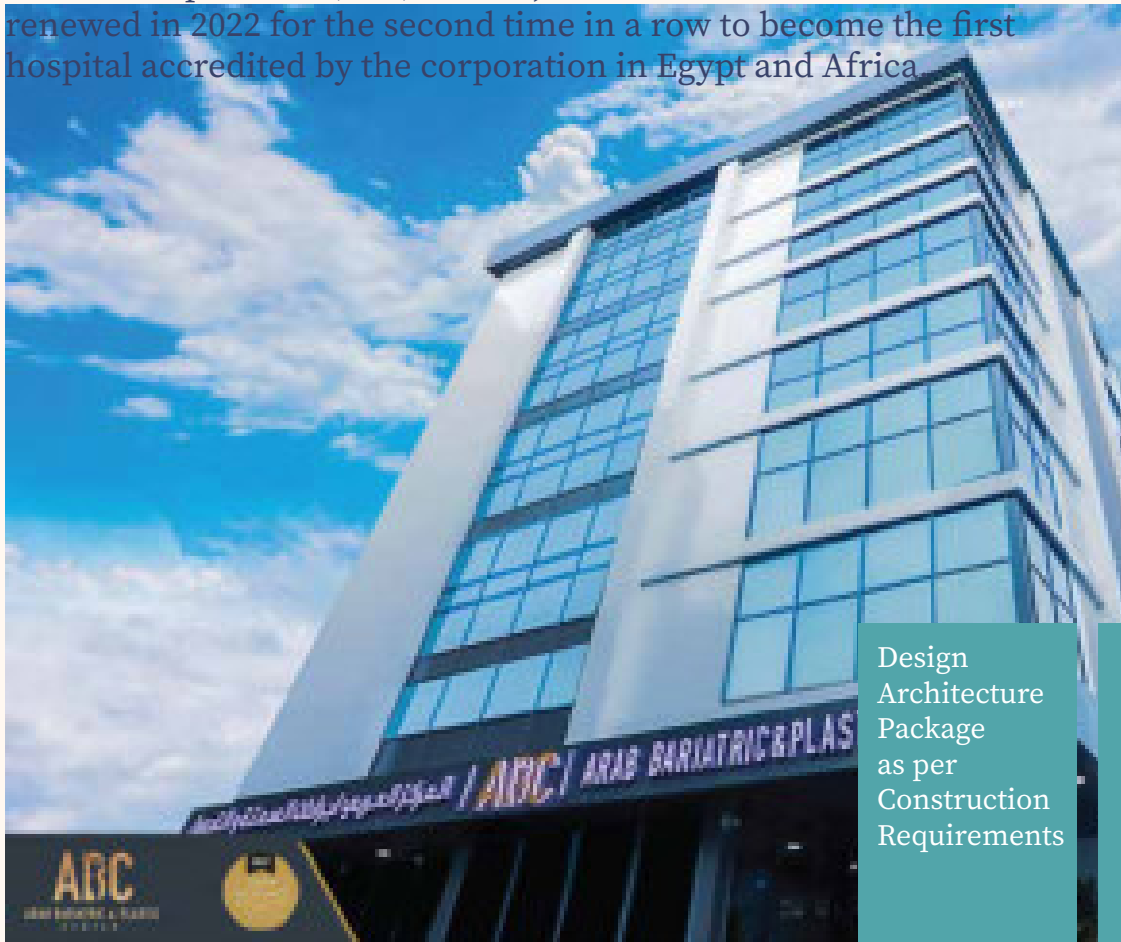


**DAR-EL SHEFA HOSPITAL  
ELEVATOR LOBBY**

# ABC Hospital

Syria Street, El Mohandseen, Cairo

ABC Hospital was established in 2019 as the first hospital specialized in obesity and plastic surgeries in Egypt and Africa. The hospital also obtained the American accreditation from the Surgical Review Corporation (SRC) in 2019, and the accreditation was renewed in 2022 for the second time in a row to become the first hospital accredited by the corporation in Egypt and Africa



Design  
Architecture  
Package  
as per  
Construction  
Requirements

MEP  
Design  
Package.

Tender  
Evaluation

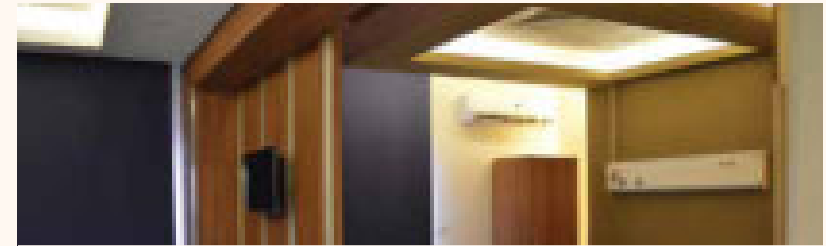
Construction  
Supervision

Procurement  
Support



# Al Zaytoon Specialized Hospital, El Amireya, Cairo

Al-Zaytoun Specialized Hospital contains most of the medical specialties, which are "heart - brain and nerves - digestive system and endoscopy - kidney medicine and surgery - orthopedics - joint and cartilage treatment - fracture clinic - internal medicine - urinary tract - general surgery - physical therapy for men and women - anti-smoking - rheumatism"



## **Diar Scope of work: Fire fighting and Fire Hose system Package Design and shop drawing**

- Hydraulic calculations: Determining the water flow requirements and pipe sizes to ensure adequate coverage and pressure throughout the system.
- Sprinkler selection and placement: Choosing the appropriate sprinkler type (e.g., wet, dry, pre-action) and strategically positioning them based on the fire risk and occupancy.
- Pump and water supply selection: Sizing and specifying pumps and water storage tanks to meet the system's flow and pressure needs.
- Alarm and control system design: Integrating the fire fighting system with the building's fire alarm system for early detection and automatic activation.
- Standpipe and hose system design: Including stand pipes and fire hoses in strategic locations for manual firefighting by trained personnel.

# Dar El Orouba

Nasr City, Cairo

Our Scope of Work was the Engineering Design Package

Design Architecture Package as per Construction Requirements

MEP Design Package.

Tender Evaluation

Construction Supervision

Procurement Support



Dar El Orouba Hospital is a legacy of medical Excellence, located in Nasr City, A Building consisting of 6 Floors

# Al Sayeh Square HiCare

located in **Manama, Bahrain** on a built-up area 3000 m2 including 12 clinics, reception, laboratory,..etc.



Diar scope of work  
Architecture Design  
Package as per  
Construction  
requirements  
**MEP Design Package.**

# Linear Accelerator

**Air Force  
Military  
Hospital**

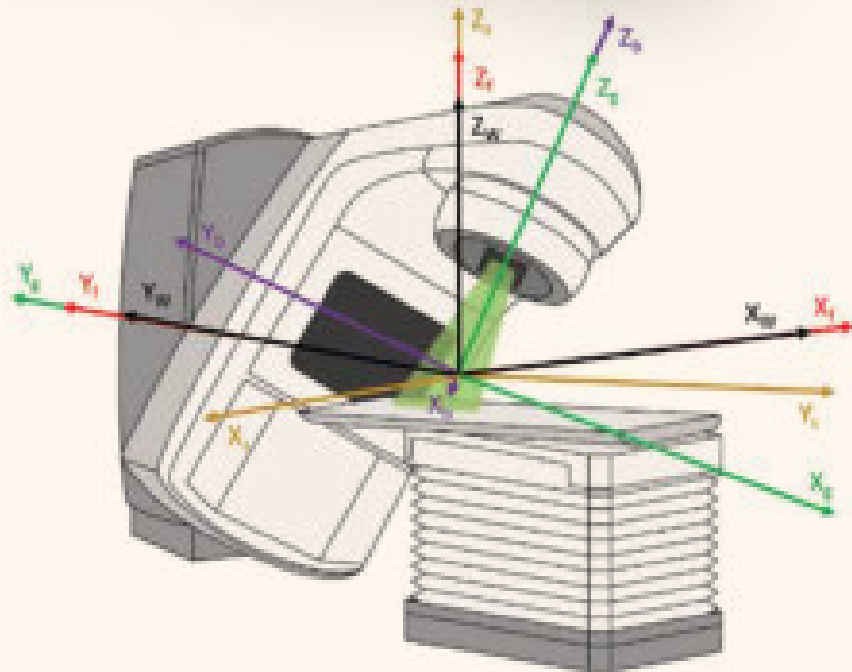
**Moustafa  
Kamel  
Military  
Hospital**

**Maadi  
Military  
Hospital**

**El-  
Galaa  
Military  
Hospital**

**Wadi  
El Nile  
Hospital**

**Damietta  
Building  
Cancer  
Center  
Hospital**



## Diar scope of work

EPC for full package of Architecture and MEP works for the Linear Accelerator room and related control room including the following:

- Architecture finishing
- HVAC
- Electrical
- Low Current systems

# Leksell Gamma Knife®

## Icon™

Elekta

Shaping a new era in  
intracranial radiosurgery



### Diar scope of work

Design all electrical, HVAC and control works for the Gamma Knife equipment and related control room including the following:

- HVAC
- Electrical

Accelerator

A large red tower crane is the central focus of the image, extending from the bottom towards the top. The crane's lattice structure is clearly visible, and it is set against a clear, light blue sky. The crane's jib extends diagonally across the frame. The overall scene is a construction site, likely for a large-scale project.

# DIAR PROJECTS

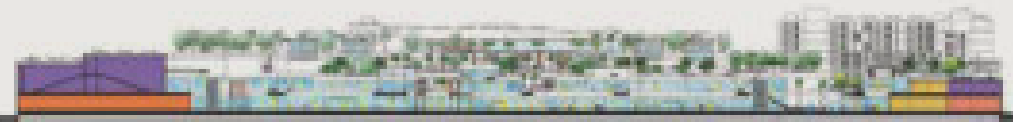
**INFRASTRUCTURE PROJECTS**  
Residential, Commercial, Educational

## PROJECT LOCATION.

Jeddah Garden Walk is located in Jeddah, KSA. In strategic place with high visibility and accessibility from major roads 'King Abdul Aziz Road' and 'Ahmed Al Atas Road'.

# JEDDAH GARDEN WALK - JGW

Mixed -Use District



- JEDDAH GARDEN WALK brings Urbanity, a Strong Sense of Place, Unique Identity and Livability through Series of BEAUTIFUL GARDENS, Paseos, Landscaped Plazas, Courtyards and Terraces. These elements are integrated into a Cohesive, Harmonious and Sustainable Development which can phased incrementally and adaptable to evolving demands.

- The Idea of Gardens is carried through vertically with Green Roofs, Loggias, landscaped amenities and shaded terraces to create a beautiful Residential Community creating a true Mixed -Use District.

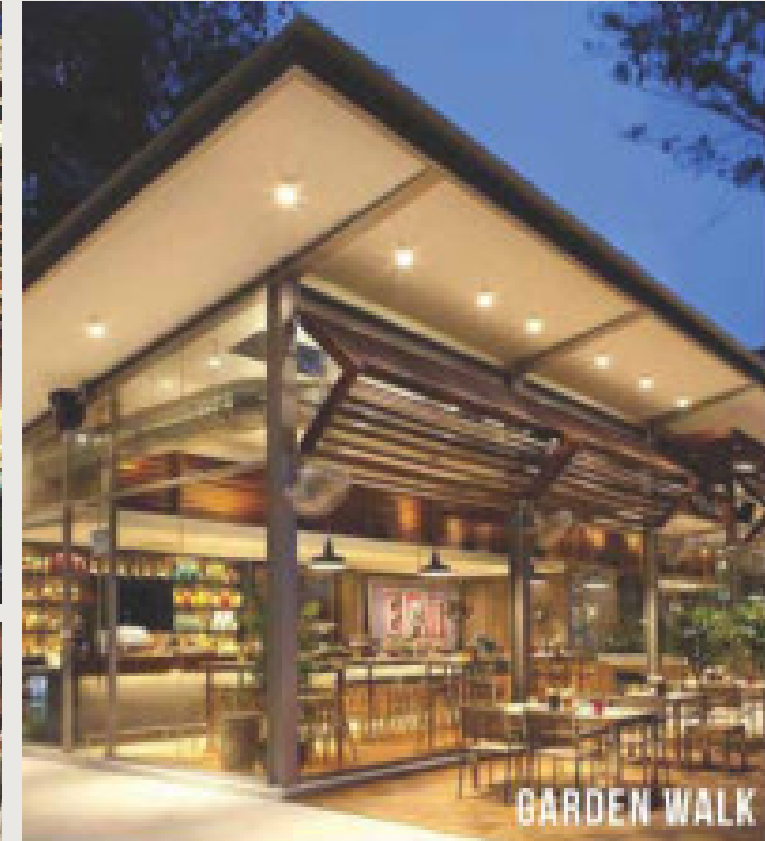
# Design Elements

---

- Urban Destination
- Graden Walk
- Commercial Mixed Use
- Residential
- Adaptive Enviroment

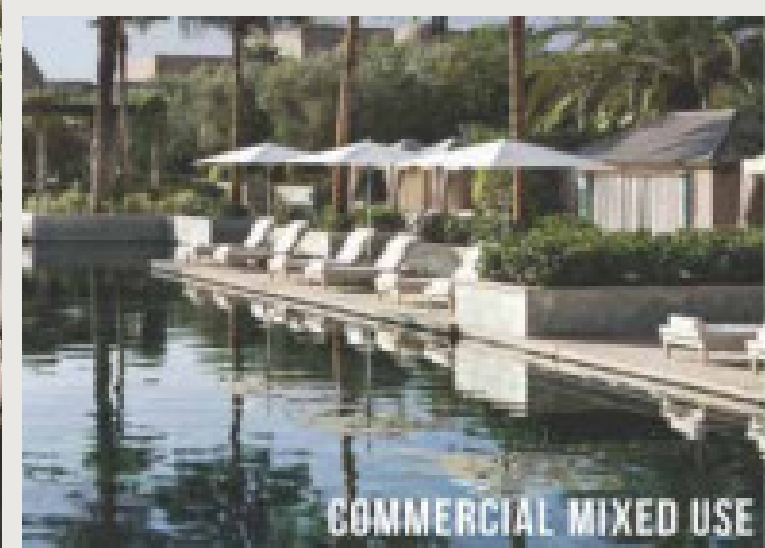






**OUTDOOR DINING**  
CLIMATE CONTROLLED SPACES

**WATER PLAY**  
INTERACTIVE WATER FEATURES





## Scope of work.

Complete design services carried out by Lead Consultant:

Concept Verification & Issuance of final Concept Stage:

1. Review and verification of existing masterplan concept design and advise with all findings that will affect the design development of the project.
2. Review and verification of existing Architecture concept design and advise with all findings that will affect the design development of the project.
3. Develop concept design for infrastructure works.
4. Develop concept design for structure works.
5. Develop concept design for MEP works.
6. Develop concept design for Security works.
7. Develop concept design for lighting works.
8. Develop concept design for signage works.
9. Develop concept design for information technology works.
10. Develop concept design for waste management works.
11. Develop concept design for conveyance system works.



# Pearl Of Qatar Qatar

Residential

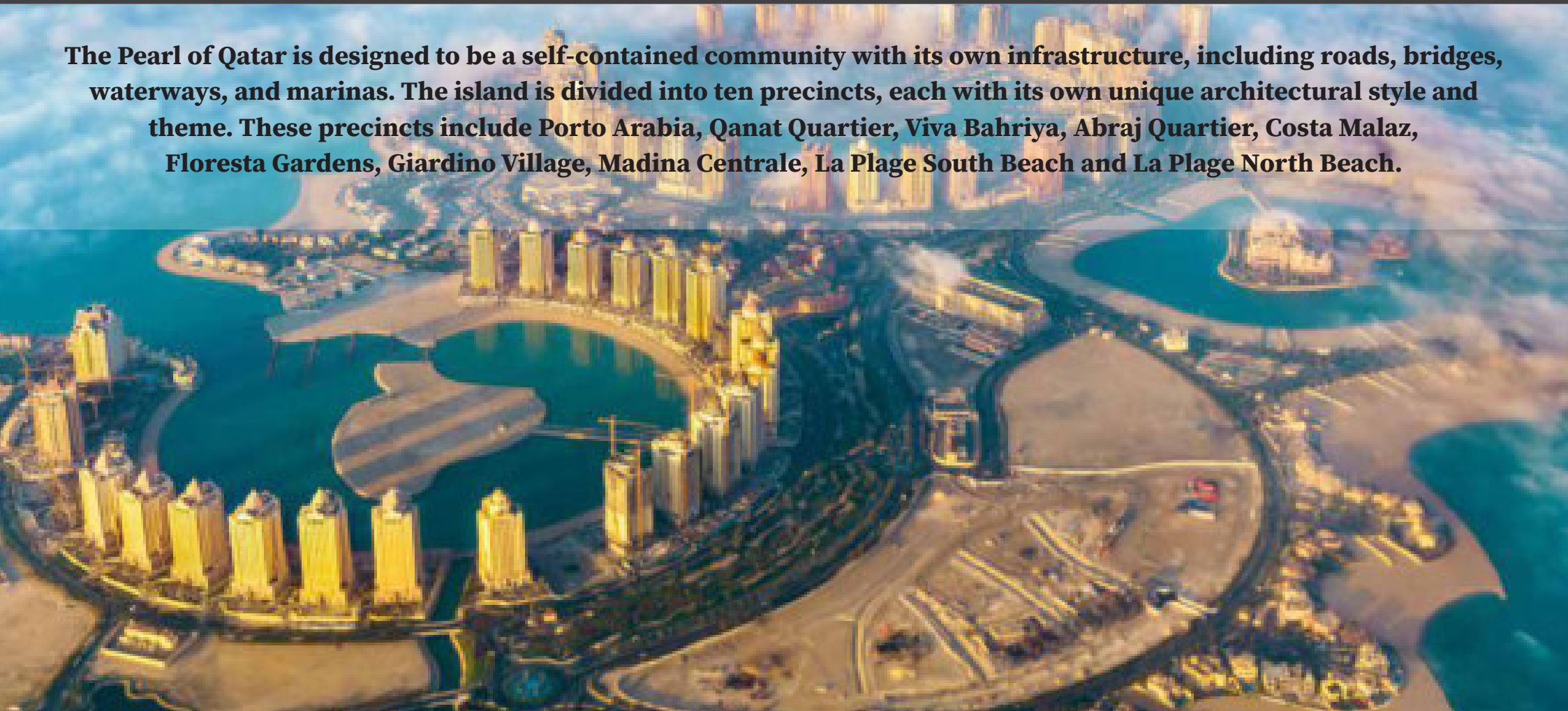
The Pearl of Qatar is a luxurious man-made island located off the coast of Doha, Qatar. It is a multi-billion dollar project that spans over 4 million square meters and features residential, commercial, and entertainment facilities. The project was initiated in 2004 by United Development Company (UDC) and has been developed in phases.

# Pearl Of Qatar Qatar

Residential

The Pearl of Qatar is designed to be a self-contained community with its own infrastructure, including roads, bridges, waterways, and marinas. The island is divided into ten precincts, each with its own unique architectural style and theme. These precincts include Porto Arabia, Qanat Quartier, Viva Bahriya, Abraj Quartier, Costa Malaz, Floresta Gardens, Giardino Village, Madina Centrale, La Plage South Beach and La Plage North Beach.

**The Pearl of Qatar is designed to be a self-contained community with its own infrastructure, including roads, bridges, waterways, and marinas. The island is divided into ten precincts, each with its own unique architectural style and theme. These precincts include Porto Arabia, Qanat Quartier, Viva Bahriya, Abraj Quartier, Costa Malaz, Floresta Gardens, Giardino Village, Madina Centrale, La Plage South Beach and La Plage North Beach.**



# Pearl Of Qatar Qatar

## Residential

- Porto Arabia is the heart of the island and features a vibrant marina with luxury yachts and boats. It also has high-end retail stores such as Gucci and Louis Vuitton as well as fine dining restaurants overlooking the marina.



- Qanat Quartier is inspired by Venice with its canals and colorful buildings. It features beachfront apartments and townhouses with private beaches.

- Viva Bahriya offers beachfront living with stunning views of the Arabian Gulf. It has luxurious apartments with access to private beaches.

- Abraj Quartier is designed to be the commercial hub of the island with office spaces and retail stores.

- Costa Malaz features exclusive villas overlooking the sea. It also has a five-star hotel called Marsa Malaz Kempinski.

- Floresta Gardens offers lush greenery with parks and gardens. It has townhouses surrounded by greenery.
- Giardino Village offers Mediterranean-style villas surrounded by gardens.
- Madina Centrale is inspired by traditional Arab architecture with souqs (markets) selling local products.
- La Plage South Beach offers beachfront living with access to private beaches while La Plage North Beach offers beachfront apartments overlooking the sea.



The Pearl of Qatar also has world-class amenities such as schools, hospitals, mosques, parks, cinemas, spas, gyms as well as entertainment facilities such as bowling alleys and ice skating rinks.

Overall, The Pearl of Qatar is an ambitious project that aims to provide a luxurious lifestyle for residents while attracting tourists from around the world.



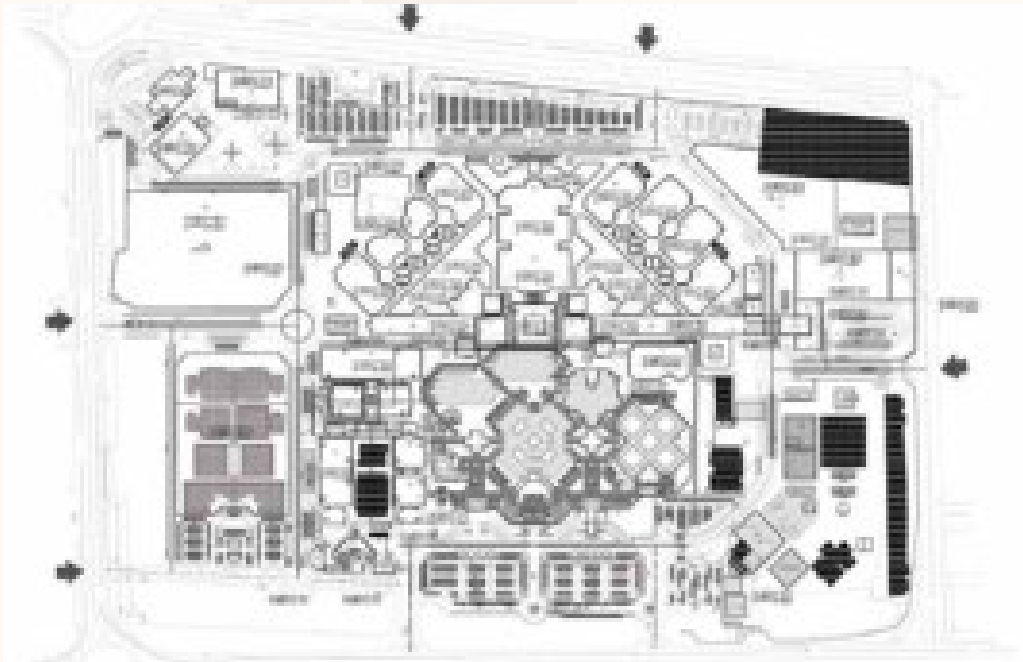
**MOHARRAQ**  
**Villas - Bahrain**  
Residential

# King AbdulAziz University

## Girls Faculties at Faisaliah

### AL MANSOURA 2 BUILDINGS

King Abdulaziz University has two separate campuses; one for male students and another for female students, as required by the Islamic teachings.



Owner:  
King Abdullaziz University  
Location:  
Al Maather, Riyadh, Saudi Arabia





# King AbdulAziz University

---

## Girls Faculties at Faisaliah

Diar scope of work (for 15 Buildings on Mansoura 2) is to perform and deliver the complete following items:

- 1- MEP Package Design and shop drawing (Mechanical, Electrical, Plumbing).
- 2- The technical specifications of the project



The Executive workshop drawings for the project, which consist of the following:

- 1- Workshop drawings for air conditioning works
- 2- Workshop drawings for fire fighting network works
- 3- Workshop drawings for sanitation and water supply
- 4- Workshop drawings for electrical works
- 5- Workshop drawings for light current systems (fire alarm - television monitoring network - data)
- 6- Coordination workshop drawings

For Buildings

H01, H02, H03, H04, H05, H06, H07, H08, H09, H10  
H11, H12, H14, S02, S05

# Neama Town Resort

Rabwat Neama, Sharm El Sheikh, Egypt



Offers the latest integrated real estate development project, incorporating top quality design landscape, highest level of service, professional state of the art techniques offering residential, commercial areas as well as a fully integrated residential area including studios, one and two bedrooms apartments and duplexes.

**Client:**

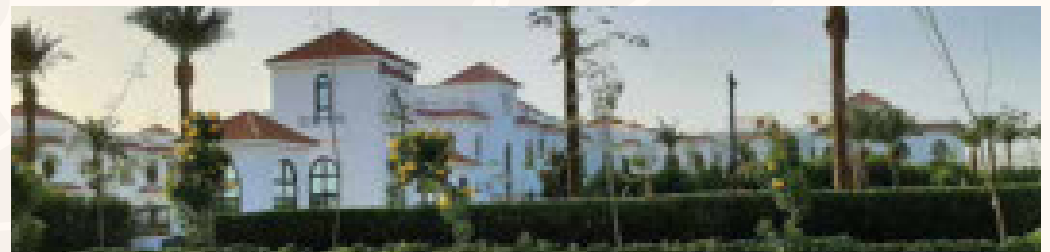
**Promo Sharm - Real Estate Development**

**Location:**

**Ibn Sina Rd, Sharm Al Shiekh**

## The Project Brief:

is located in Neama Bay, The beating heart of Sharm El Sheikh, in Rabwat Neama (Neama Hill) & elevated 100 meters above sea level, with a spectacular background of southern Sinai's mountains.



# Neama Town Resort

---

Rabwat Neama, Sharm El Sheikh, Egypt

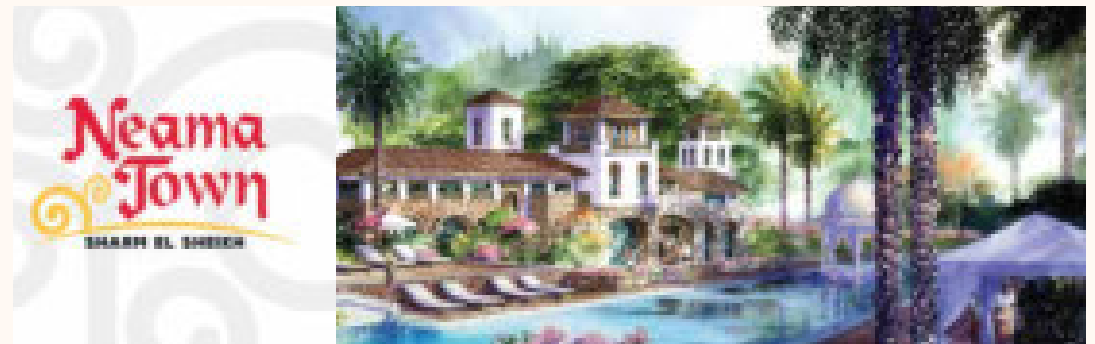
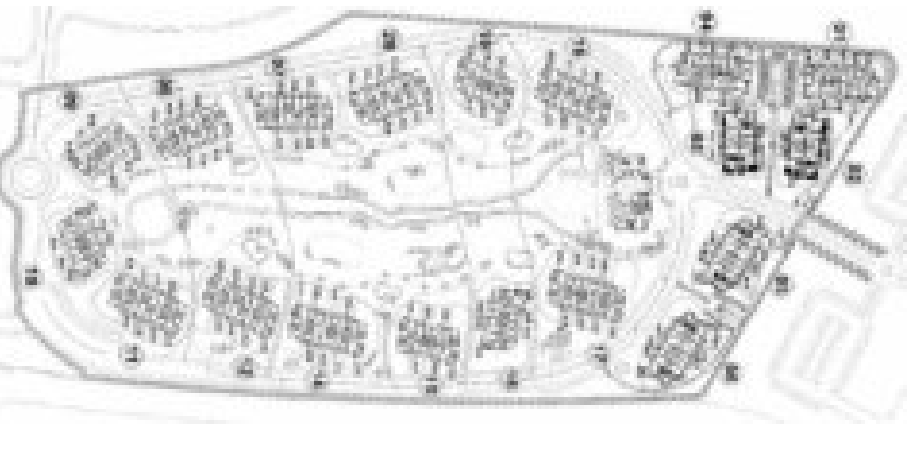


## Scope of work:

Diar defined the scope of the telecommunication infrastructure works for Promo Sharm project and to establish the design criteria for the final design. It includes estimates for telephone lines and exchanges capacities.

Design work of the project will include the following:

- Provisional Space for exchange buildings according to Egypt Telecom company (ETC) requirements.
- Engineering forecast of telephone lines demand and estimating capacity of each Exchange.
- Distribution network according the selected alternative solution, including primary and secondary cable networks, fiber optic network (as applicable), as well as network distribution components (cross connect cabinets, distribution points, etc).
- Builder's work for the network including trenches, duct banks, manholes and hand holes.

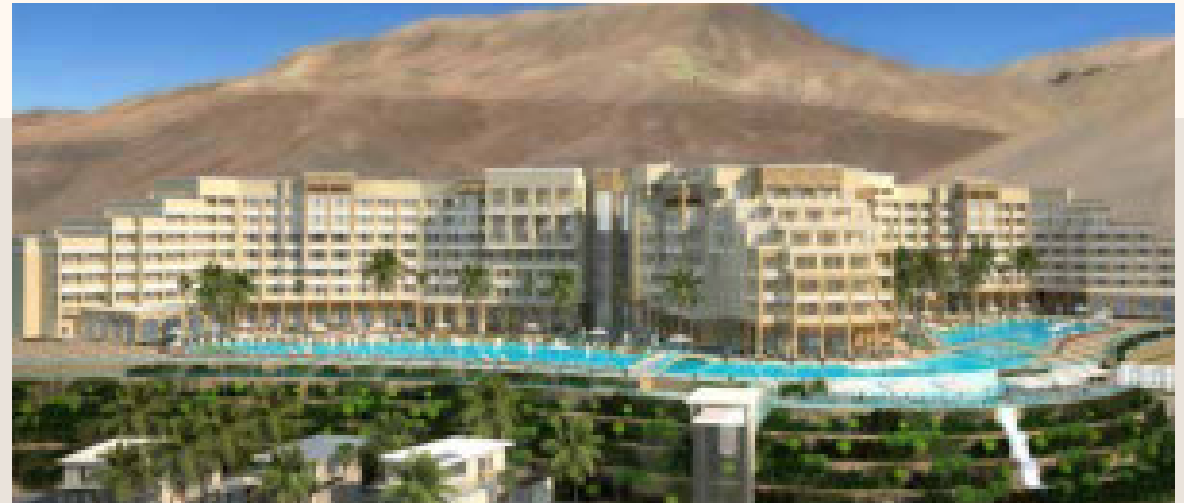
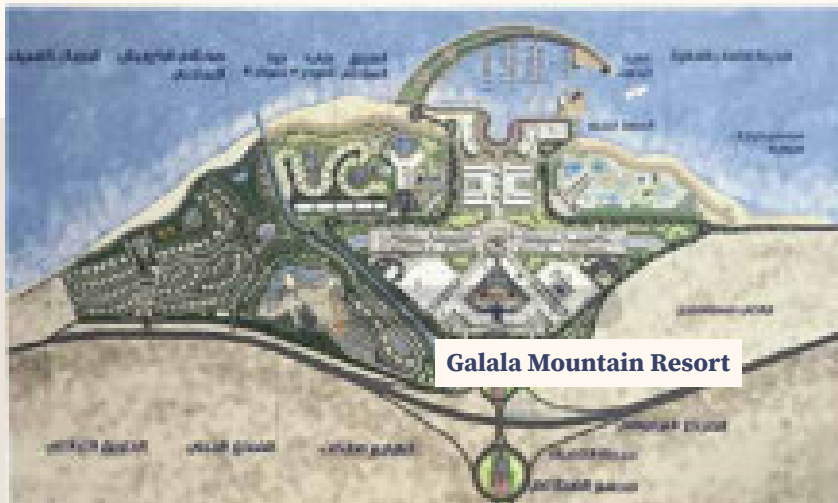


# Al Galala Hotel

---

Al Galala Mountain Resort, Al Ain El Sokhna

The Galala Hotel is located within the Galala Plateau project, the second largest national project approved by President Abdel Fattah El-Sisi in 2014, and supervised by the Engineering Authority of the Armed Forces, to be the capital of the city of Ain Sukhna and a tourist and entertainment gathering at the highest international levels.



The coastal hotel, which was designed and implemented according to the latest engineering methods and architectural designs to be a masterpiece and a distinctive sign of the project, consists of 257 rooms, 34 suites, an entrance hall, waiting salons, a giant conference hall, 4 subsidiary halls, a main restaurant, a specialty restaurant, and a parking lot.

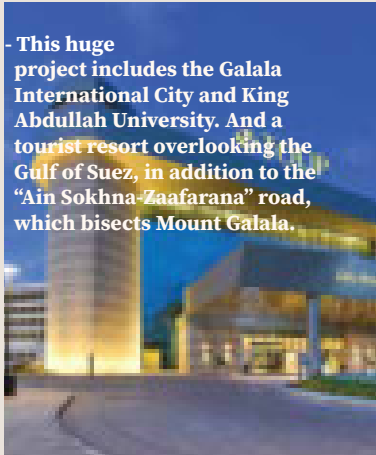


# Al Galala Hotel

---

- The Galala Plateau area...a unique area...the magic of nature surrounds it from every direction, in addition to many of the ingredients that qualified it to become one of the major national projects whose implementation is supervised by the Engineering Authority of the Armed Forces

- This huge project includes the Galala International City and King Abdullah University. And a tourist resort overlooking the Gulf of Suez, in addition to the "Ain Sokhna-Zaafarana" road, which bisects Mount Galala.



**The project area contain ground and six floors and the built up areas is about total commutative area 116000 m2**



## Diar Scope of work:

MEP Package Redesign and shop drawing Diar was responsible for the design, installation, and maintenance of the mechanical, electrical, and plumbing systems in a building. These systems are essential to the safety and comfort of the occupants and must be properly designed and installed to function properly. including Electrical, Low Current System.

# AL Sheikha Noora Hotel

---

Umm Ghuwailina - Doha - Qatar

Royal Residential Apartments  
(2B+g+M+7Typical+Stair-Case)

## The Project Brief:

Diar Consultant was invited to make a value engineering for Nora Hotel

Diar Has Prepared a report to make evaluation for the MEP engineering to apply the following concept:

- Review the main concept for MEP Package (after review found that there is no generator feed this building for emergency loads ...etc.)
- Meet the Client requirement with minimum cost.

After Review the MEP Package we found fatal mistakes in design as per next sections

- Electrical.
- HVAC Systems
- Drainage System.
- fire protection system.
- Water Supply.

This report we hve prepared was an added value to notify the client with the correction way to apply the right concept for MEP packages (add generator for emergency loads...etc.) and reduce the modification cost during construction.

## Client:

**Sheikha Noora Jasim M .J Al Thani**

## Locaion:

**Umm Ghuwailina ,Doha ,Qatar**



# Park Inn Hotel Salah, Oman

Umm Ghuwailina - Doha - Qatar



## Project Brief:

The project is endeavored to perform the Value engineering and Construction supervision for the hotel apartments including MEP Value engineering packages in the building and site layout.

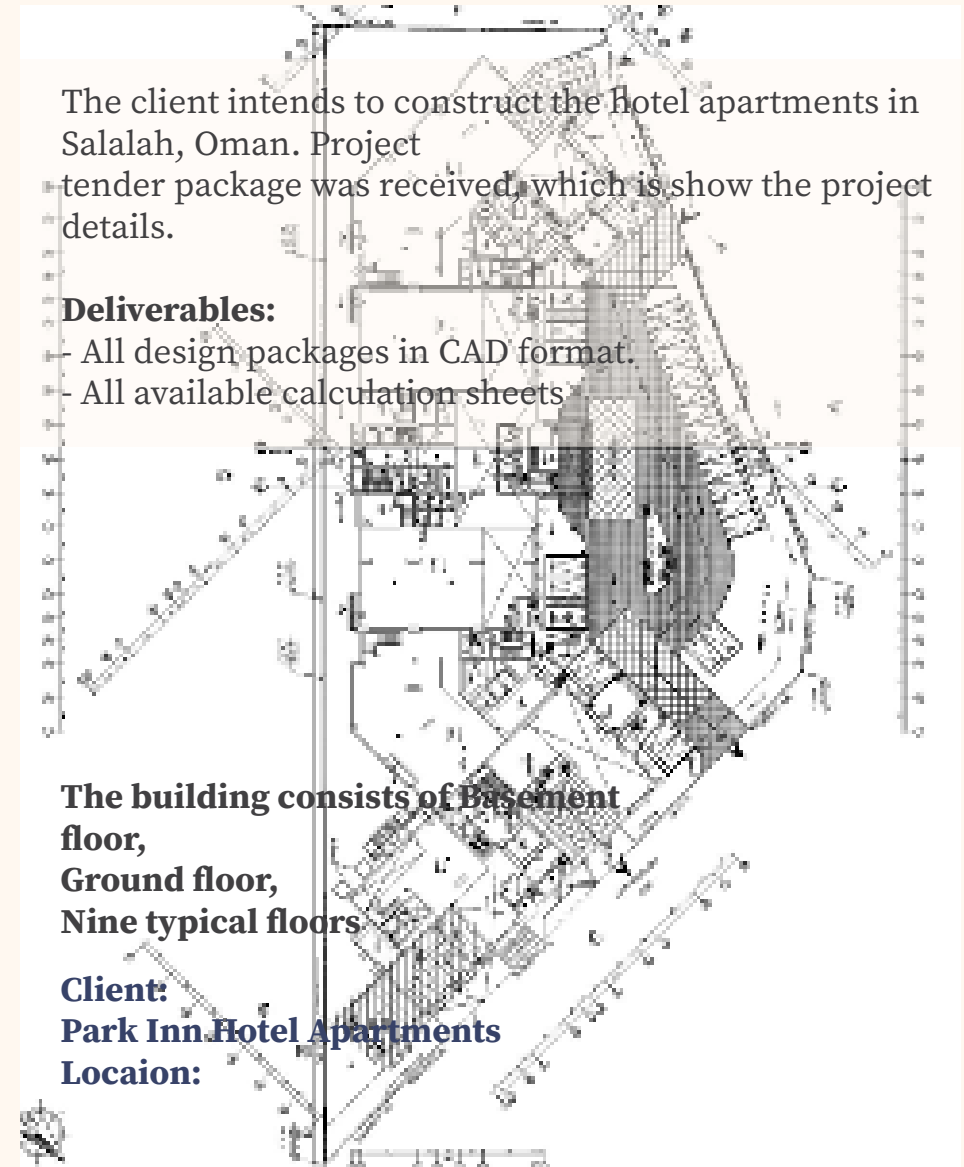
The client intends to construct the Hotel apartments in Salah, Oman. Project tender package was received, which is show the project details.

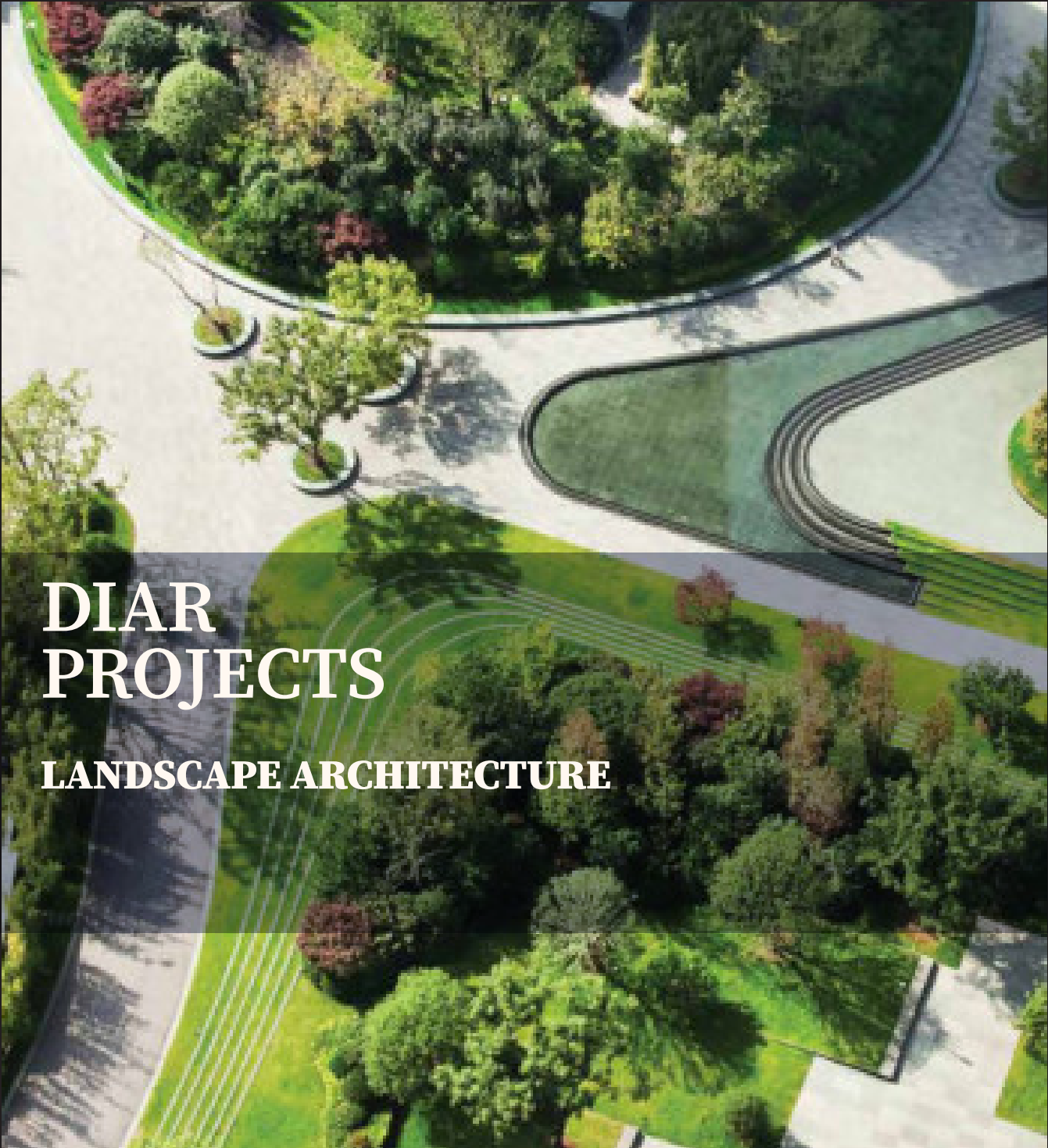
## Deliverables:

- All design packages in CAD format.
- All available calculation sheets

The building consists of Basement floor,  
Ground floor,  
Nine typical floors

**Client:**  
Park Inn Hotel Apartments  
**Locaion:**





# DIAR PROJECTS

**LANDSCAPE ARCHITECTURE**



# Nubia Plaza, Assuit

---



# Nubia Plaza, Assuit

---



Land Area :- 70,325 m<sup>2</sup>  
Total BUA :- 150,000 m<sup>2</sup>  
No. of Floors :- Basement + G + 2

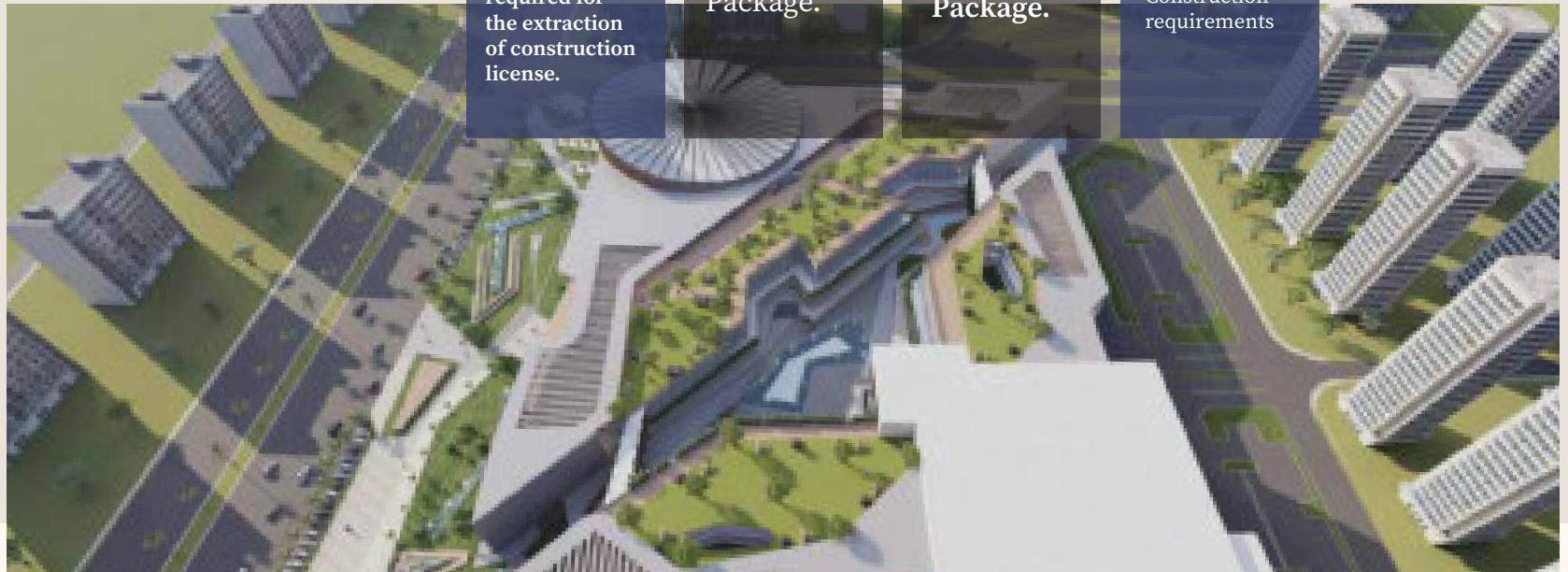
**Diar scope of work** is to perform and deliver the complete following items:

Preparation of drawings and documents required for the extraction of construction license.

Structure Design Package.

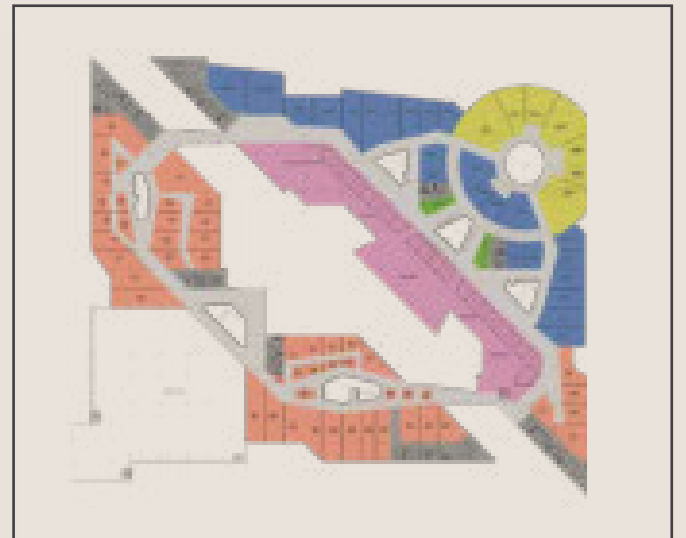
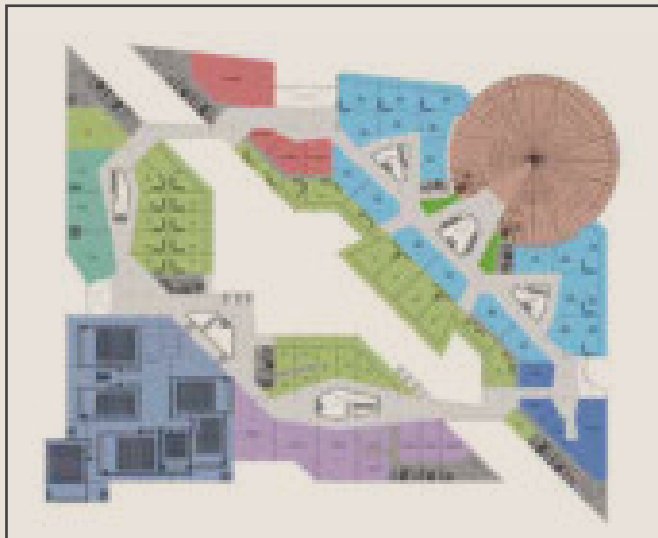
MEP Design Package.

Architecture Design Package as per Construction requirements



# Nubia Plaza, Assuit

---



# Al Khobr Garden, KSA

---

## Garden Masterplan 3D Shot

Residential Compound  
Garden

# Al Khobr Garden, KSA

---



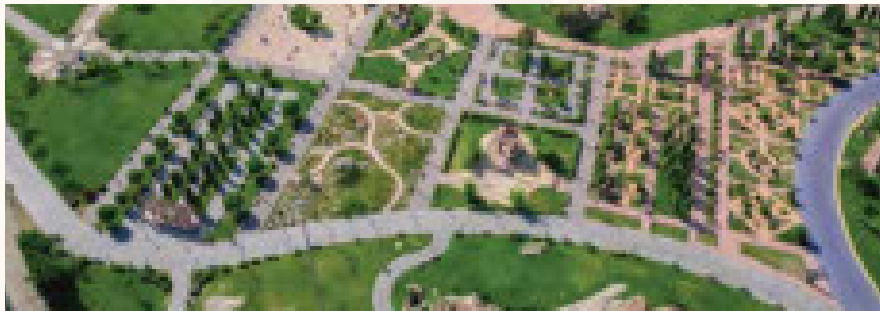
Diar scope of work is to perform and deliver the complete following items:

- Architecture **Design** Package as per Construction requirements
- **Softscape** Package.
- **Hardscape** Package.



# Rudaf Park, Taif, KSA

Located in the southern part of the city of Taif in Saudi Arabia, Arruddaf Park, also known as Al-Rudaf Park is one of the most beautiful parks in the city. Popular amongst tourists and locals alike, the park sprawls across a large expanse, and has a wide range of facilities and amenities, including musical fountains, small hillocks for rock climbing, separate playgrounds for children as well as fun-filled rides.



## Diar Scope was the Low Current Engineering for the Project

- LCN Master Plan: outlines fo the overall layout and functionality of the LCN (Low Current Plan), including cable routing, equipment locations, and system specifications.
- Lighting Control System (LCS) Design: This plan details the configuration of the LCS, including control panels, dimmers, sensors, and communication protocols.
- Irrigation System Design: This document outlines the layout and operation of the irrigation system.
- Audio/Visual System Design: this document details the equipment selection, speaker/display placement, and wiring diagrams.

Owner: Ruddad Park  
Location:  
Taif, Saudi Arabia





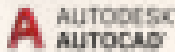
Software

**Electrical**  
Software



**Dx**

**MEP**  
Software



**Instrumen-  
-tation**  
Software



**Process**  
Software



**Piping**  
Software



Design





## SUCCESS PARTNERS

Since our foundation, Diar has established successful business relationships with many international business partners, completing projects of massive scales and following through on its commitment to safety, value creation, optimized solutions and responsiveness. Diar's clients expand across the entire globe with landmark projects.



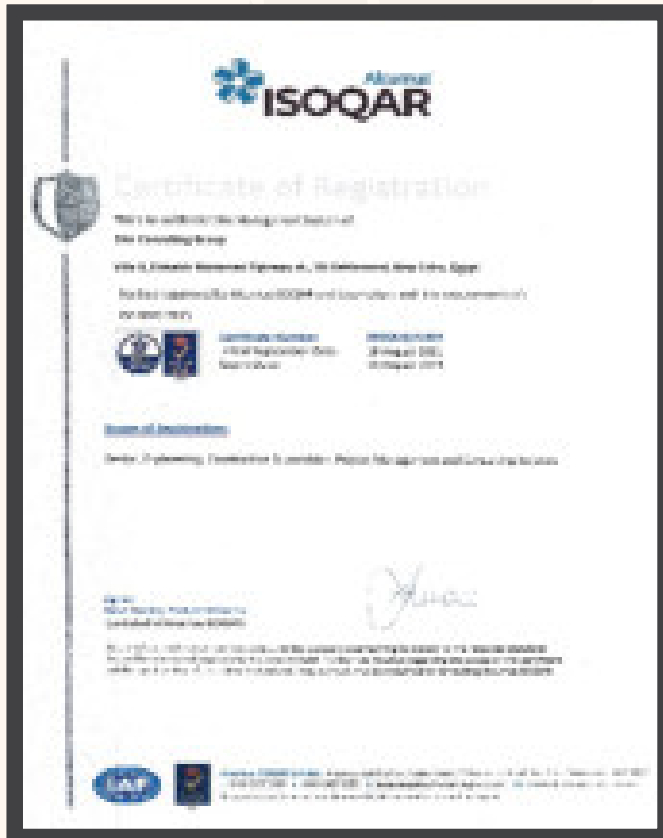
An offshore oil rig is shown at sunset, with the sun low on the horizon and a colorful sky. The rig's complex steel structure is silhouetted against the light. The text "DIAR CERTIFICATIONS" is overlaid on the left side of the image.

# DIAR CERTIFICATIONS

# Our Certifications

Out of international / national interest of the quality, environment and occupational health & safety and in line with Egypt's vision 2030 for achieving sustainable development and the company interest with the customers satisfaction and continual improvement, Diar has the leadership in obtaining certificates of international standards for:

- Quality Management Systems (ISO 9001)
- Environmental Management Systems (ISO 14001)
- Occupational Health & Safety Management Systems (ISO 45001)



# Clients Appreciation



These certifications and Clients Appreciations demonstrate our commitment to excellence and expertise in various engineering disciplines, and showcase our ability to deliver high-quality and reliable engineering services to our clients.

## OUR OFFICES MAP

Diar has successfully completed hundreds of projects all around the world, We operate throughout the surrounding region using the combined resources to serve public and private clients in the infrastructure, buildings and Oil & Gas sectors..



Algeria



Cairo  
(Head Office)



KSA



Bahrain



UAE



Oman



Singapore



South Africa



EGY Add. (Head Office)  
Villa 9, El Shaikh Mohamed El Gizawy  
street Zone 9 - 1st Settlement,  
New Cairo - Cairo, Egypt

UAE Add.  
RAKEZ free zone, RAK, UAE

Algeria Add.  
REGUS ALGERIA (GADOUCH PROJECT  
58 LOGTS LOT 33, 35, 36,  
Algiers, 1600)



Visit Our Website



☎ MOB: 0 106 642 4403

📞 TEL. / FAX: +2 2345 4411

✉ Info.diar@diargroup.com

🌐 www.diargroup.net

 facebook.com/ConsultingDiar

 Diar Consulting Group

 Diar group

 instagram.com/diarconsultinggroup/

 twitter.com/diarconsulting

Thank You